



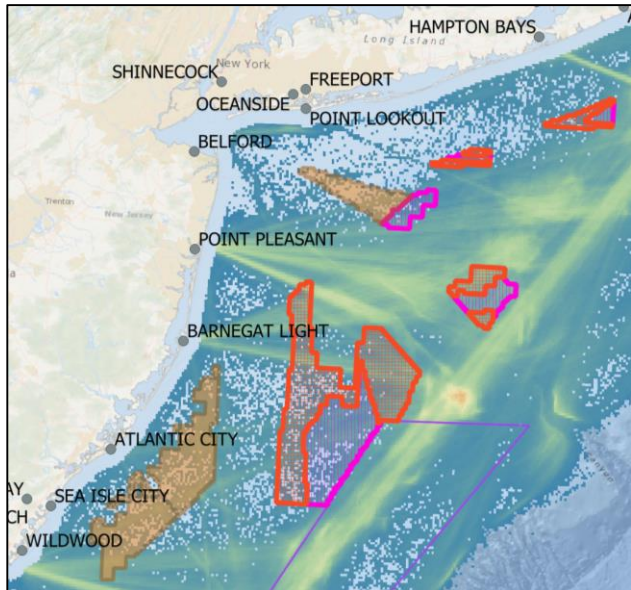
**NOAA**  
**FISHERIES**

Greater Atlantic  
Regional Fisheries Office

# NY Bight Transit Patterns: VMS Data

Douglas W. Christel  
Benjamin Galuardi

March 27, 2019



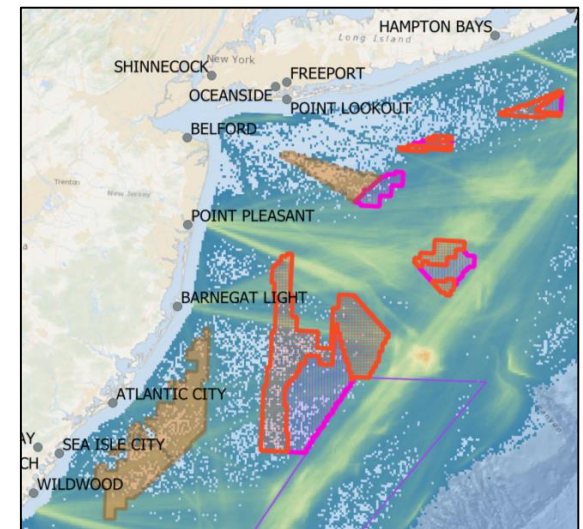
# VMS Transit Maps

## Parameters:

- All fishery codes are included
- Cells with  $<3$  unique permits are masked
- No speed filter
- ~1 km grid cells

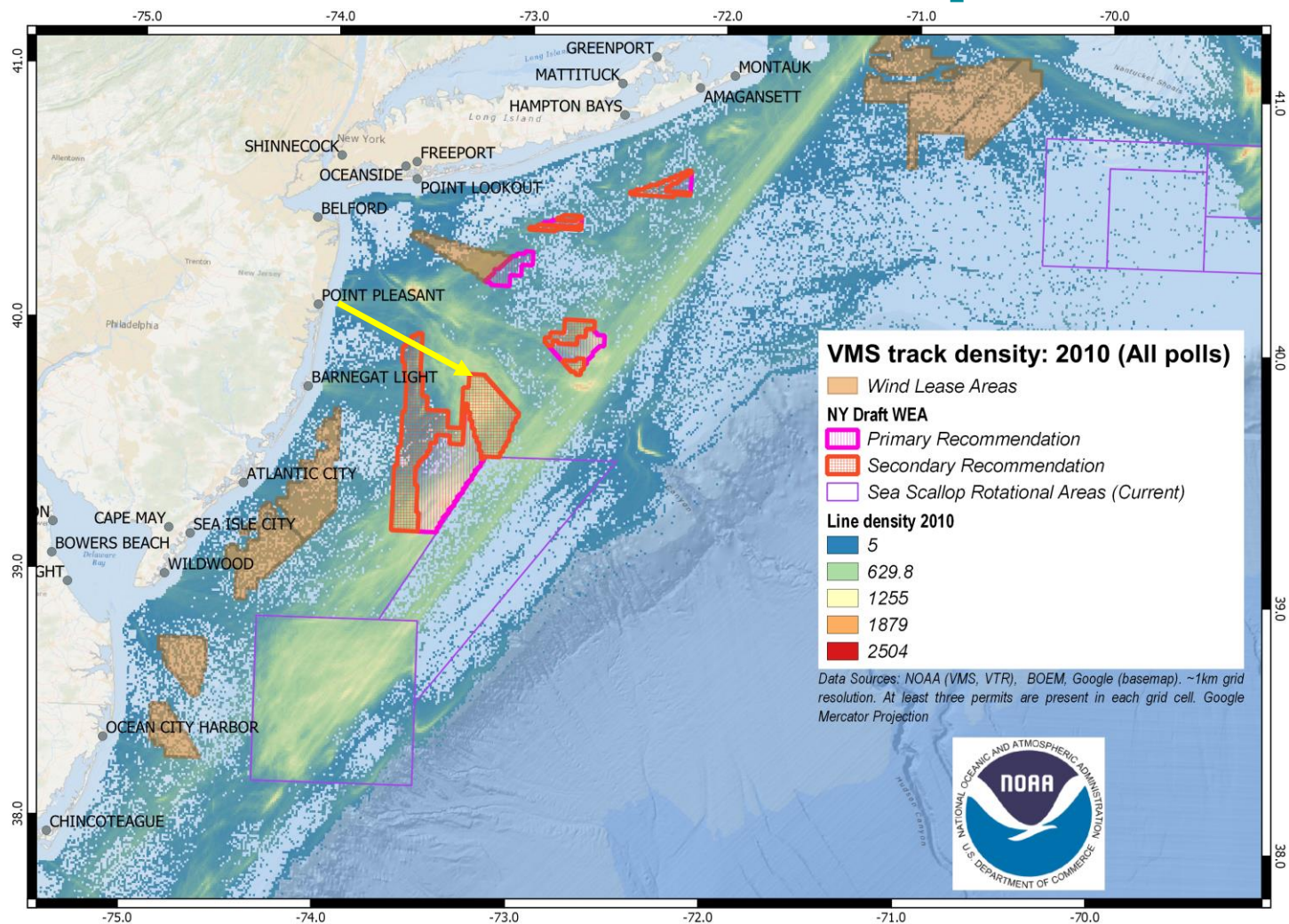
## Limitations:

- Some fisheries underrepresented
- No recreational vessels



**Actual Trip Counts and Transits**

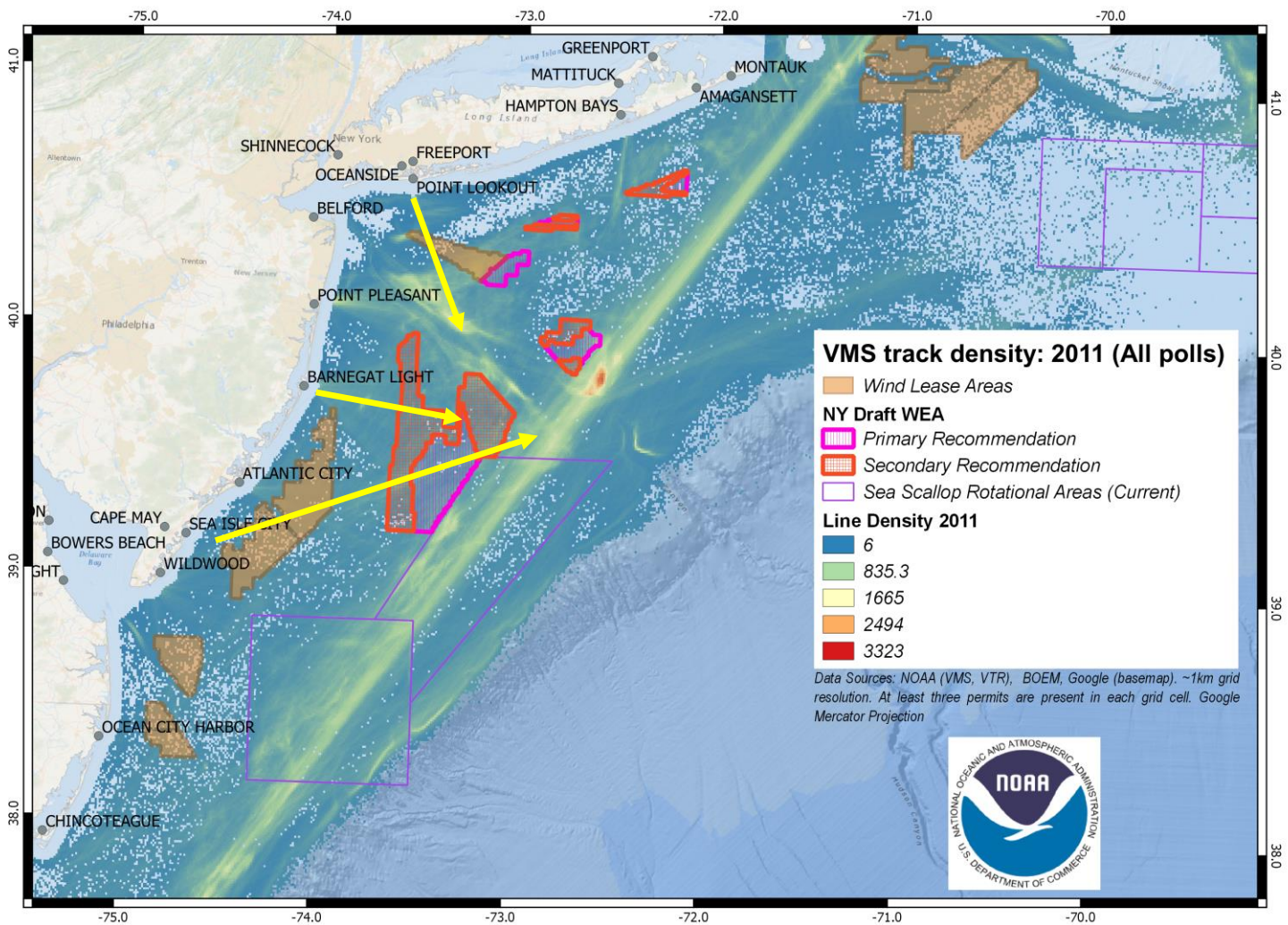
# VMS Transit Maps



2010

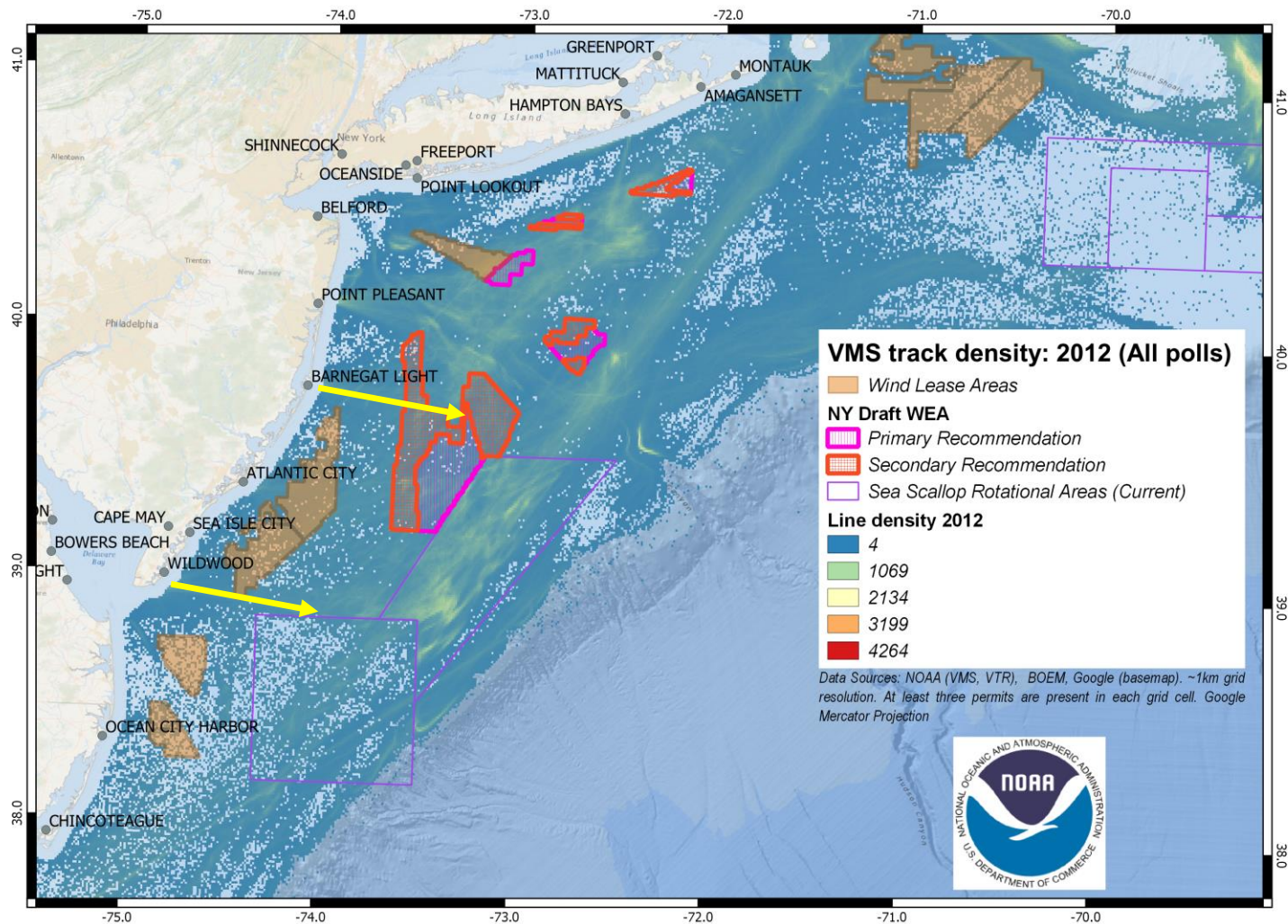


# VMS Transit Maps



2011

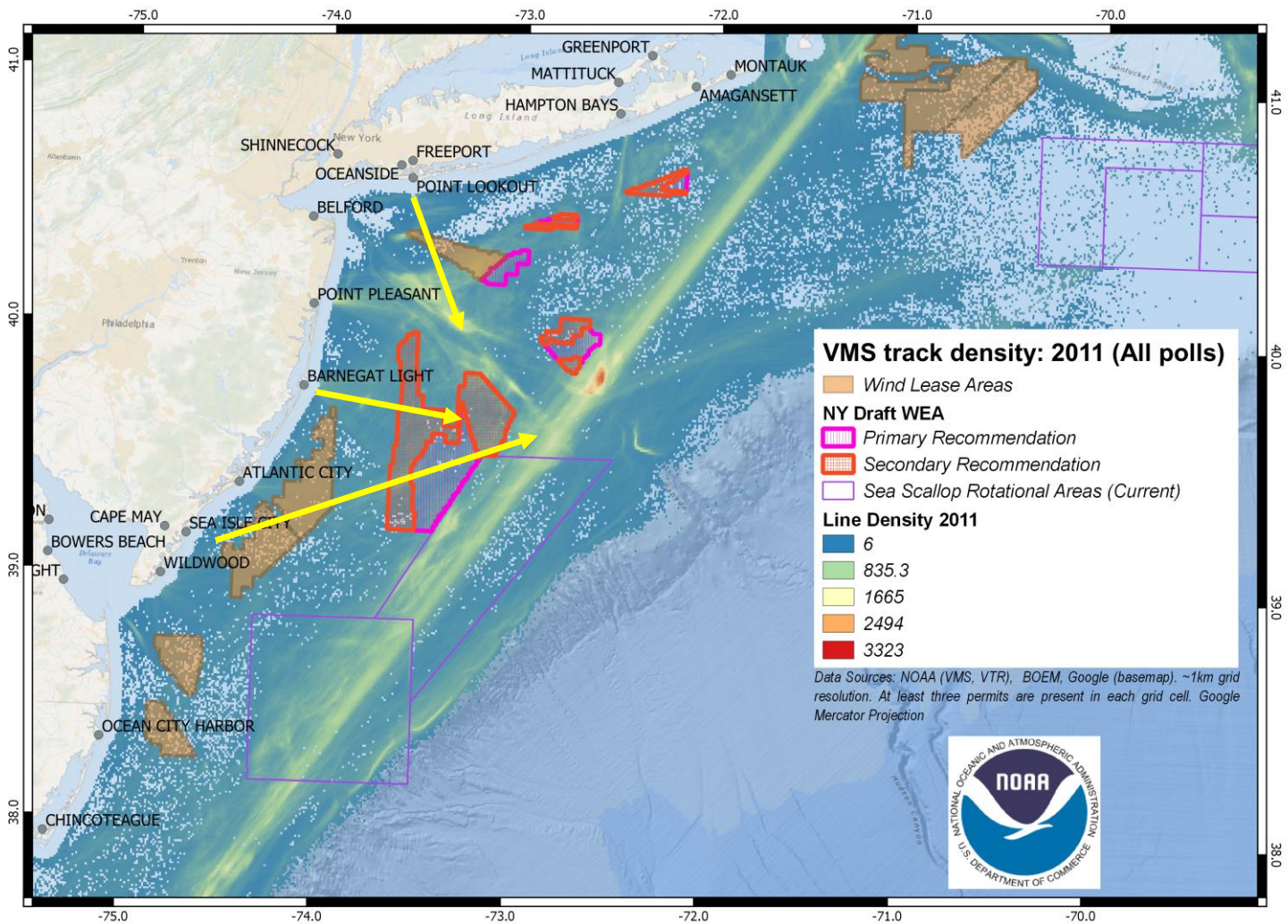
# VMS Transit Maps



2012

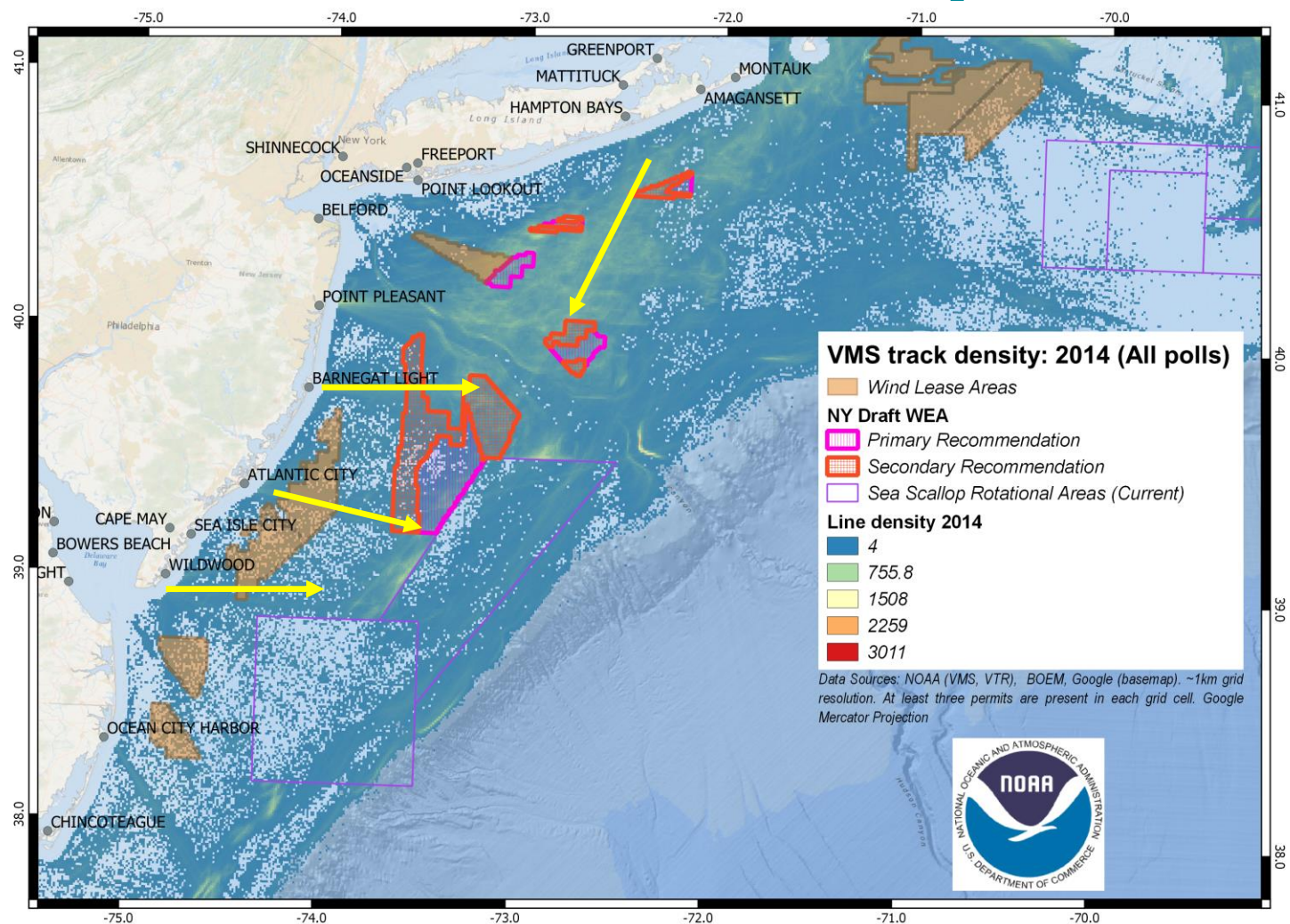


# VMS Transit Maps



2013

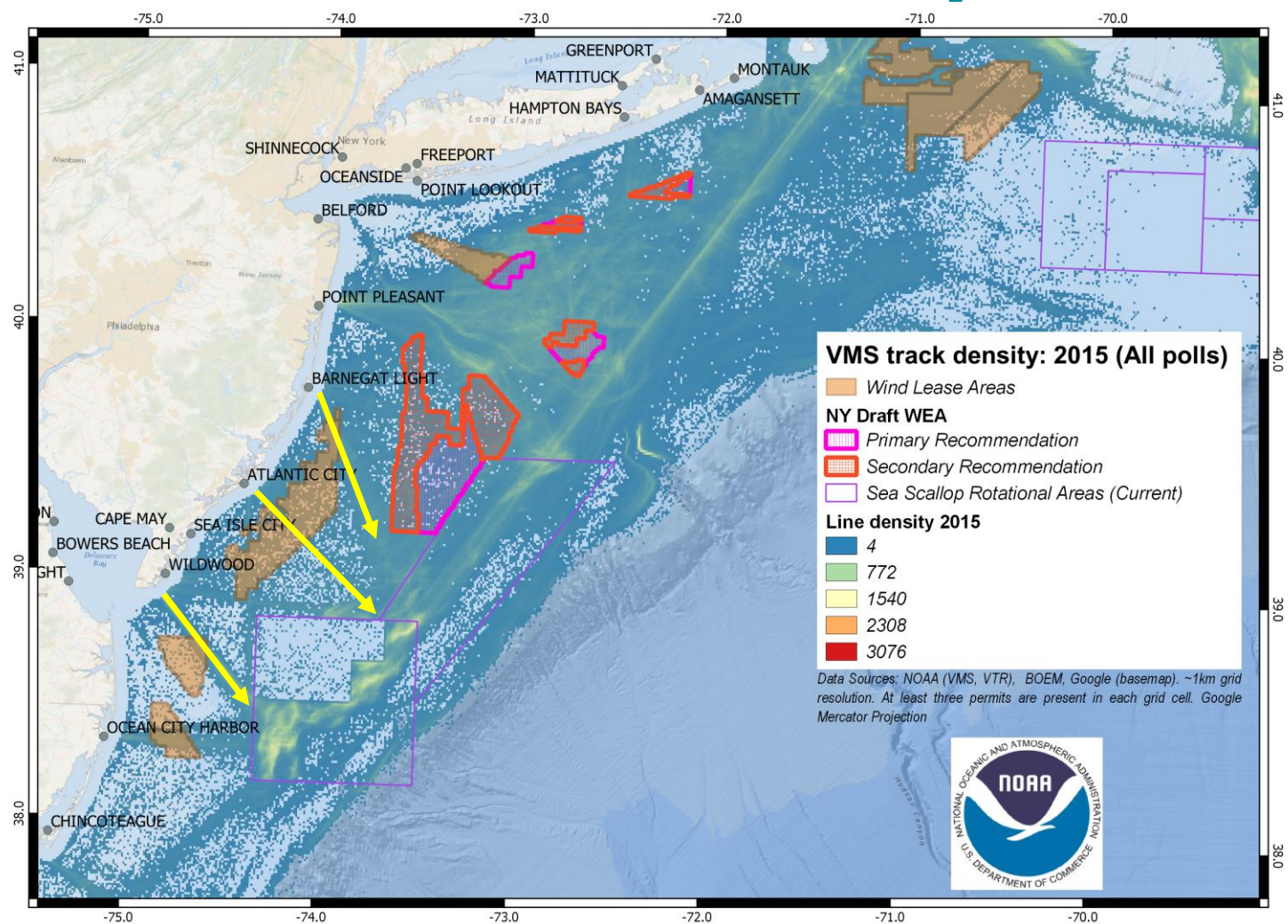
# VMS Transit Maps



2014



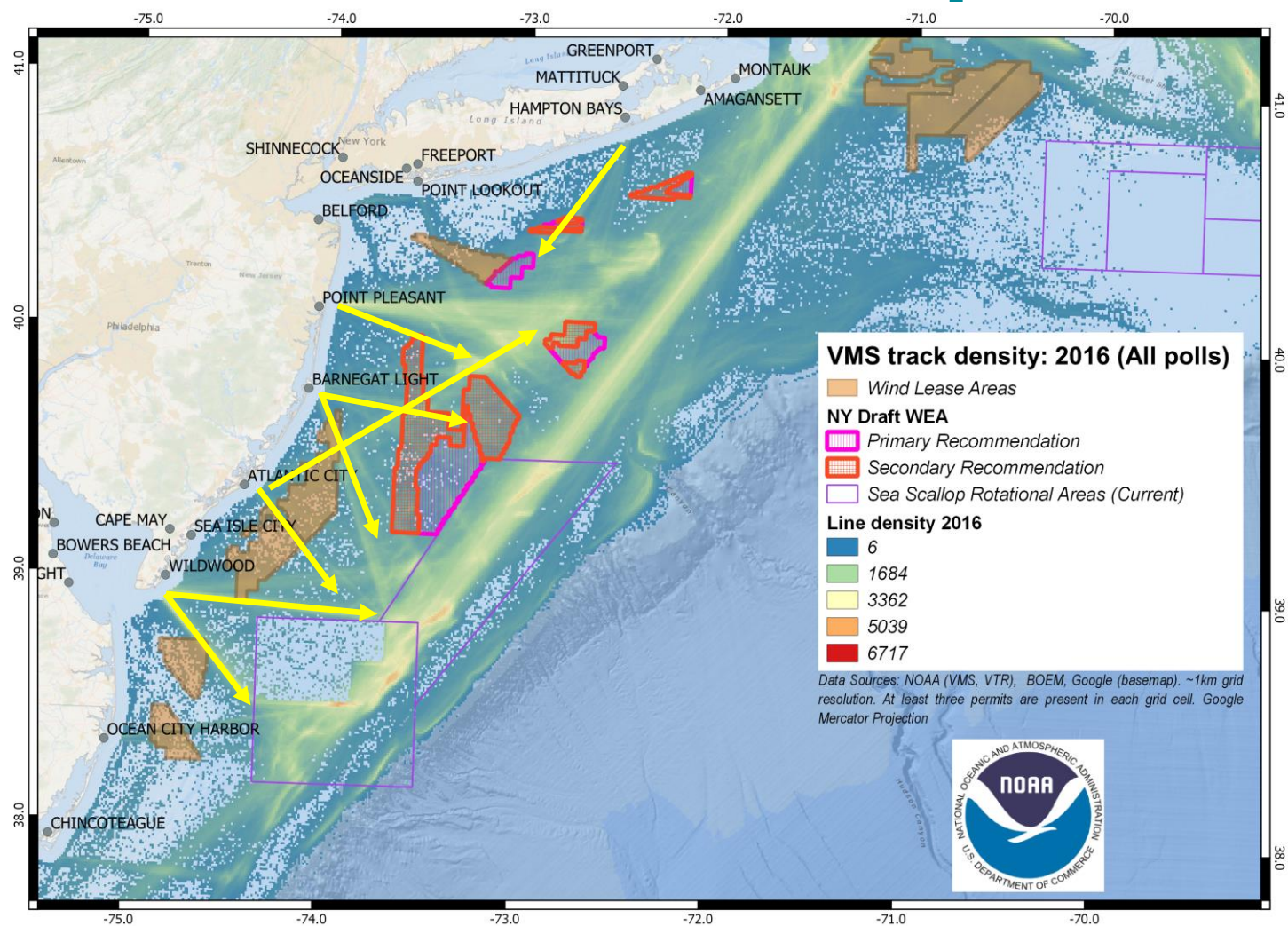
# VMS Transit Maps



2015

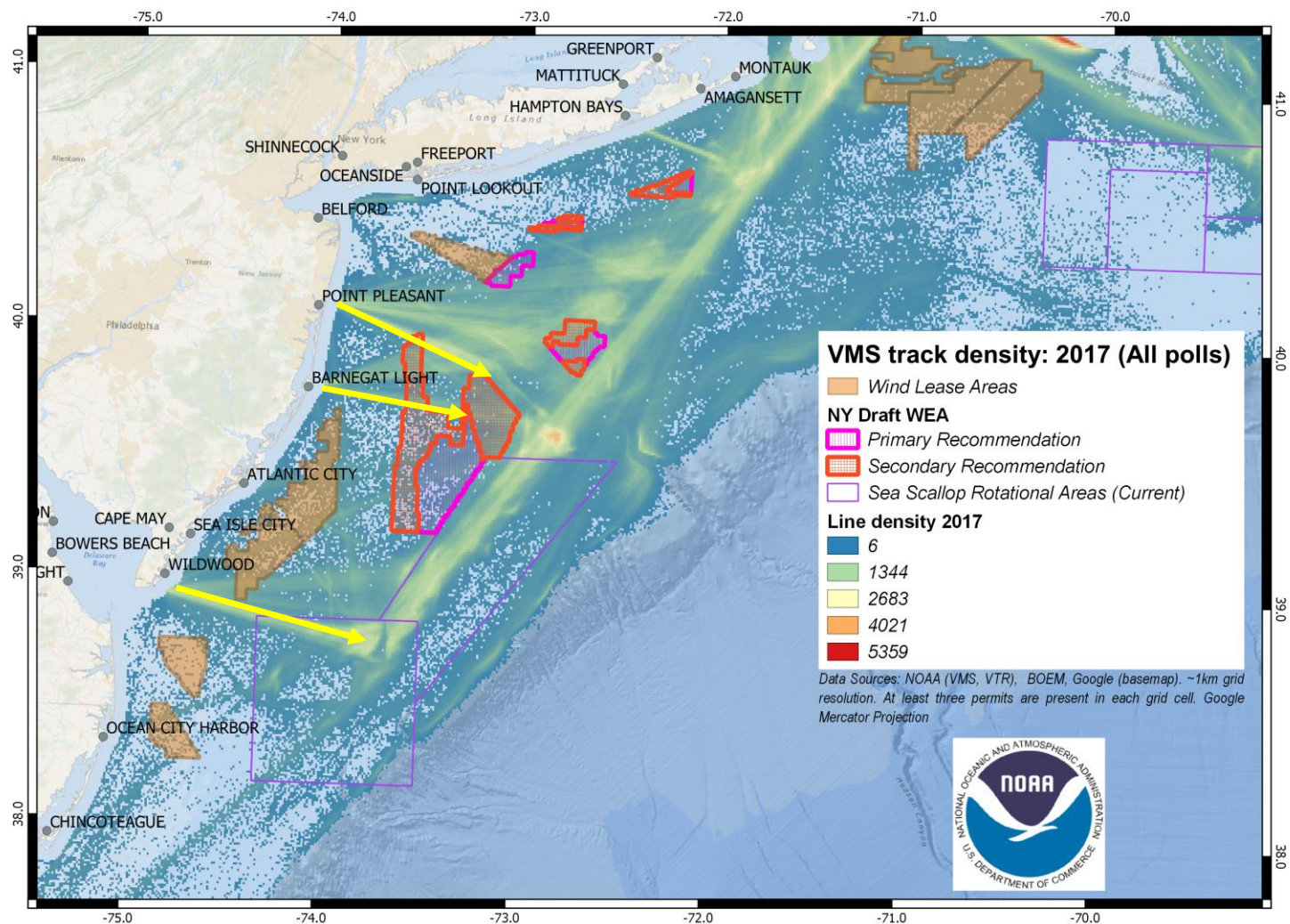


# VMS Transit Maps



2016

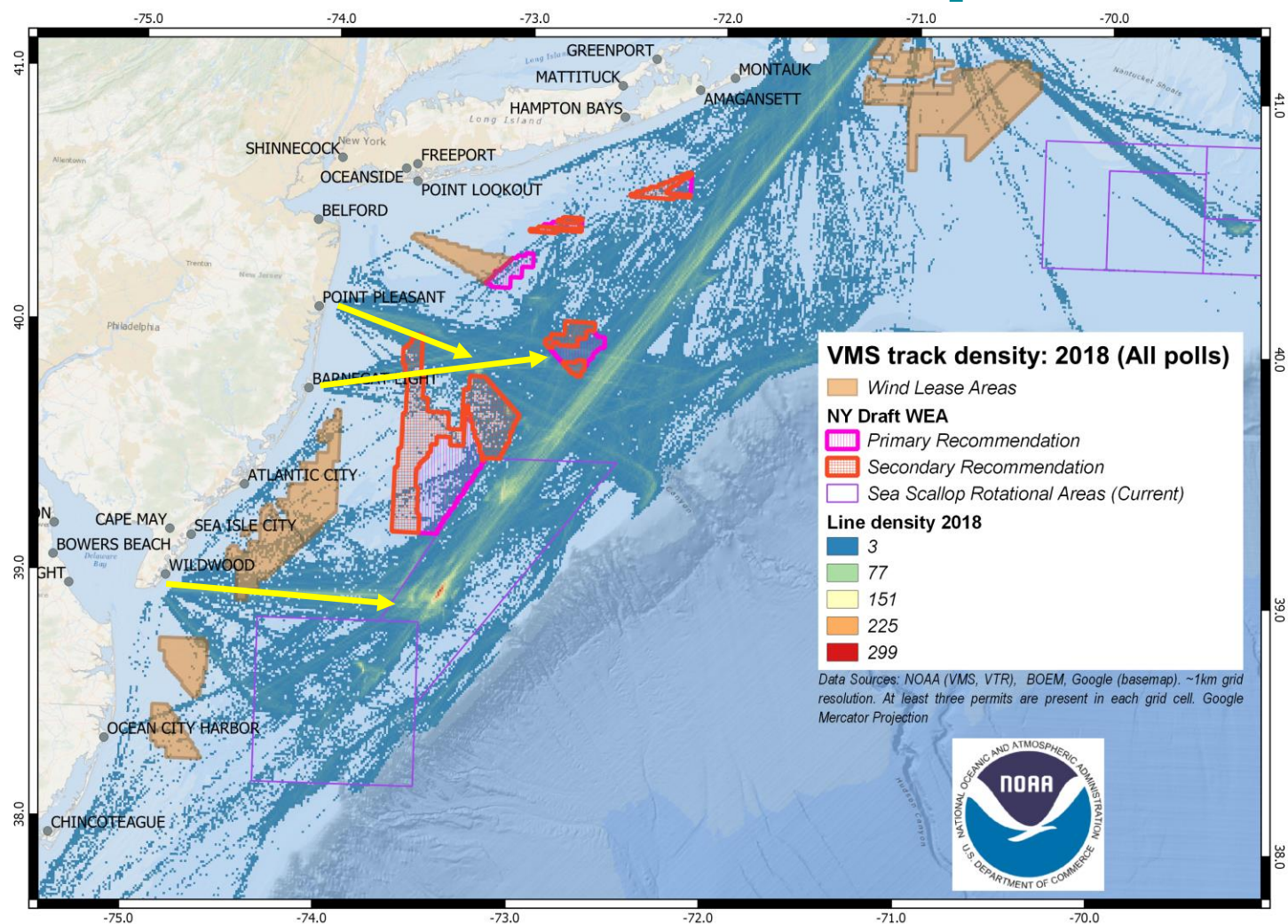
# VMS Transit Maps



2017

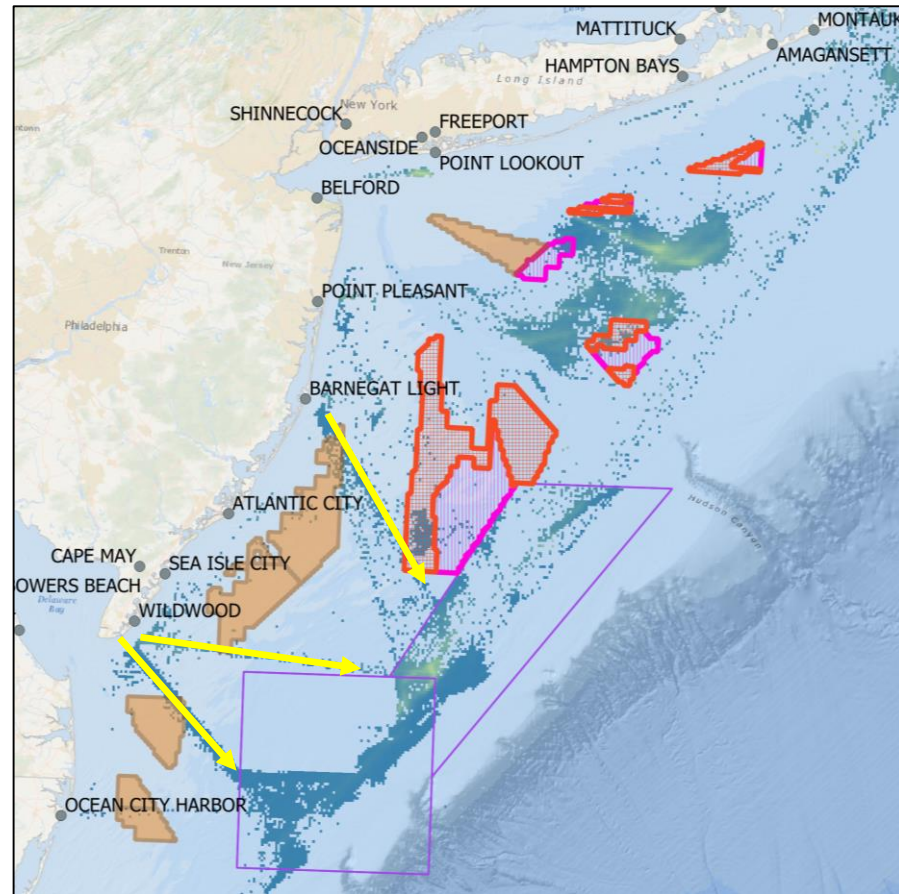
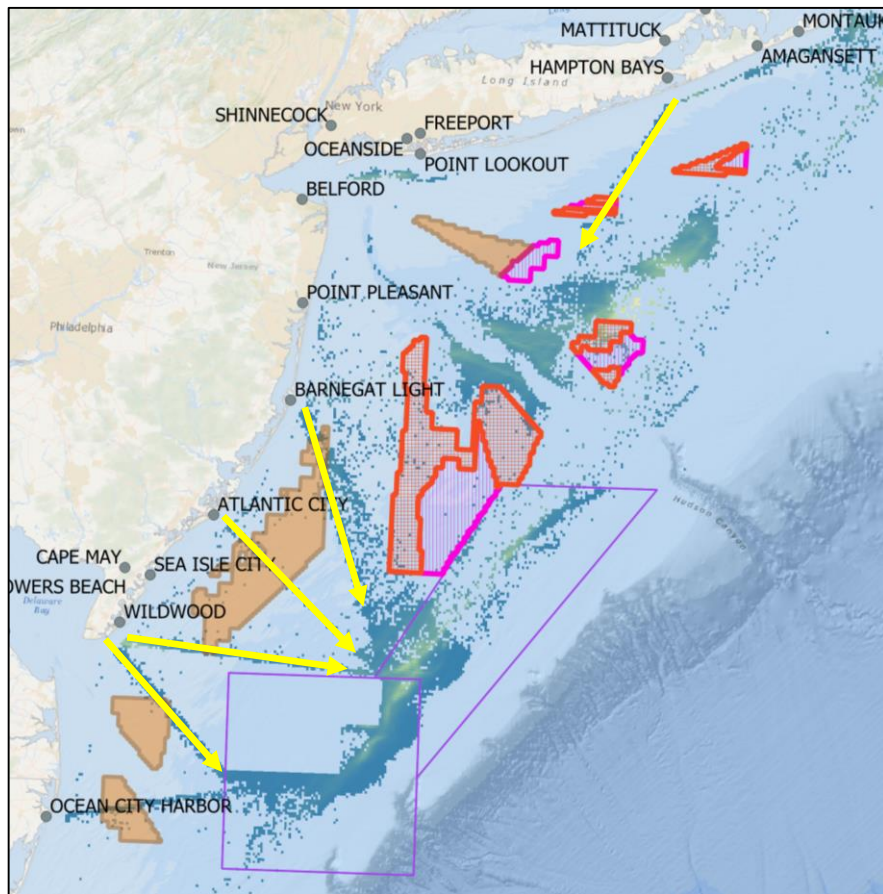


# VMS Transit Maps



2018

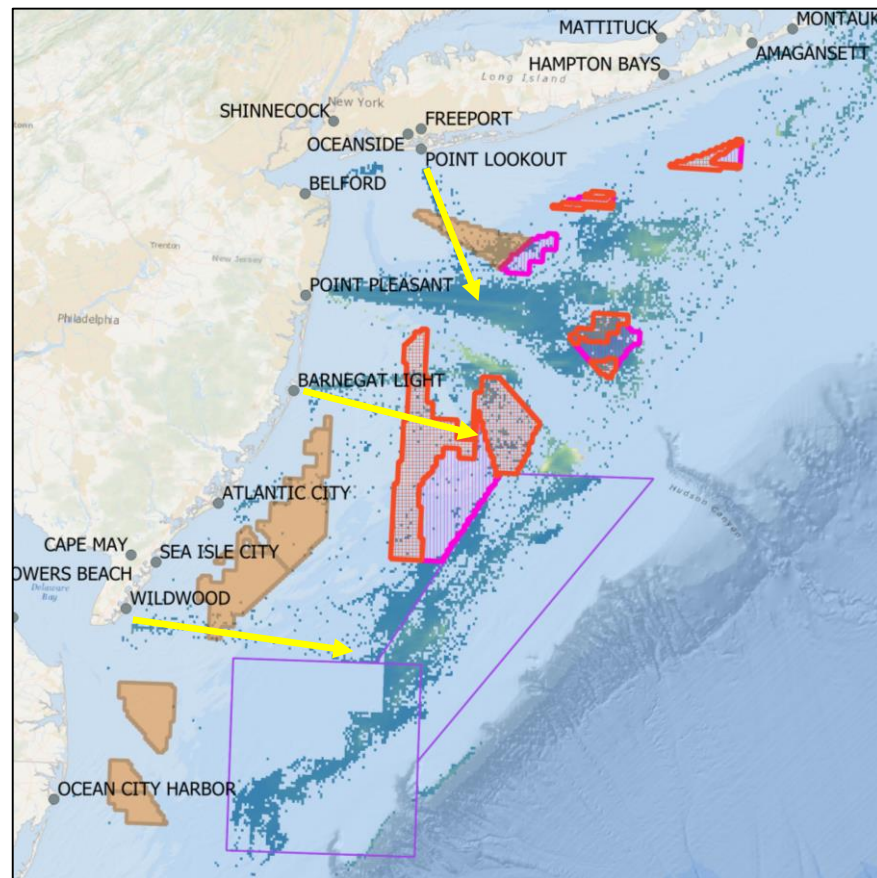
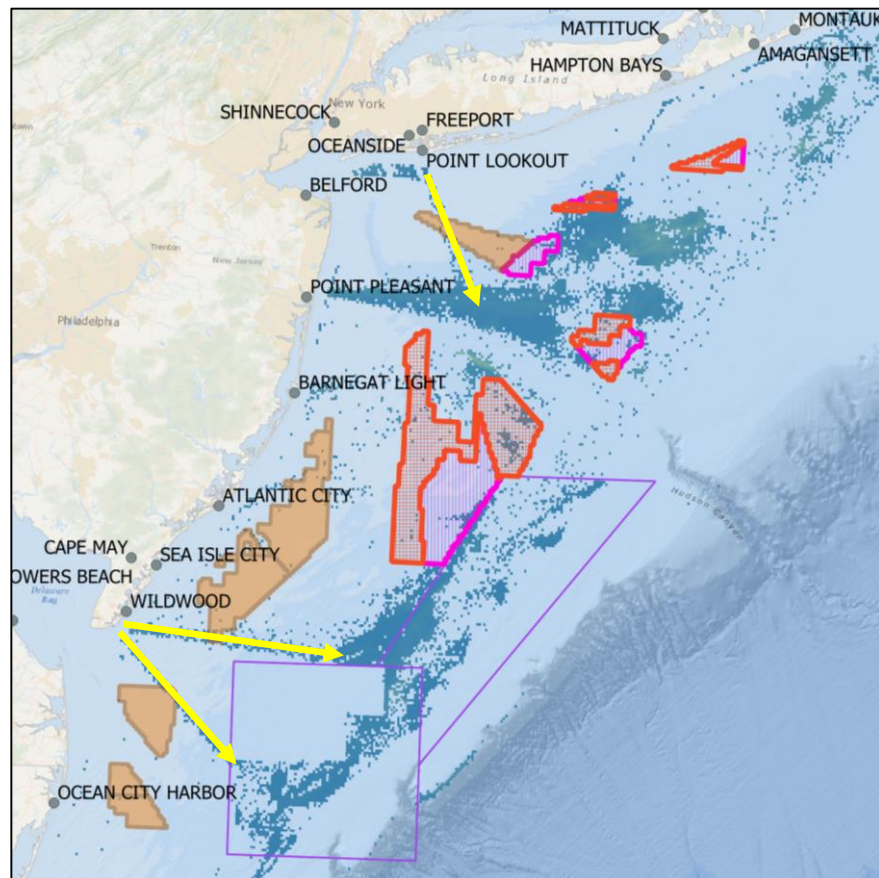
# May and June



2016

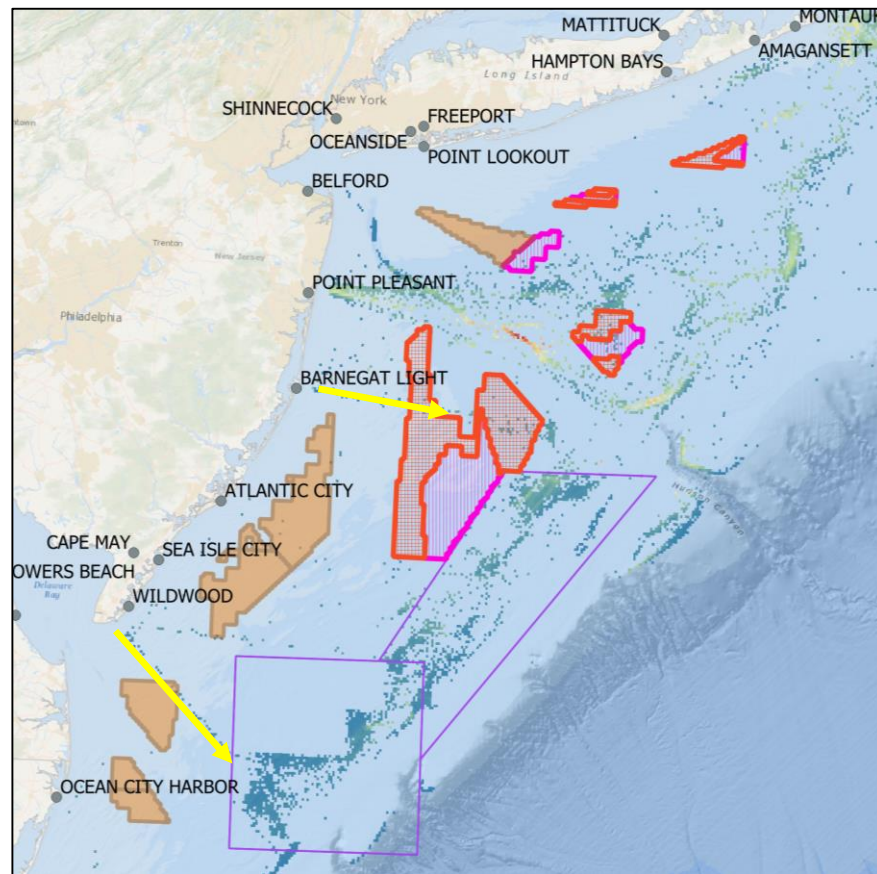
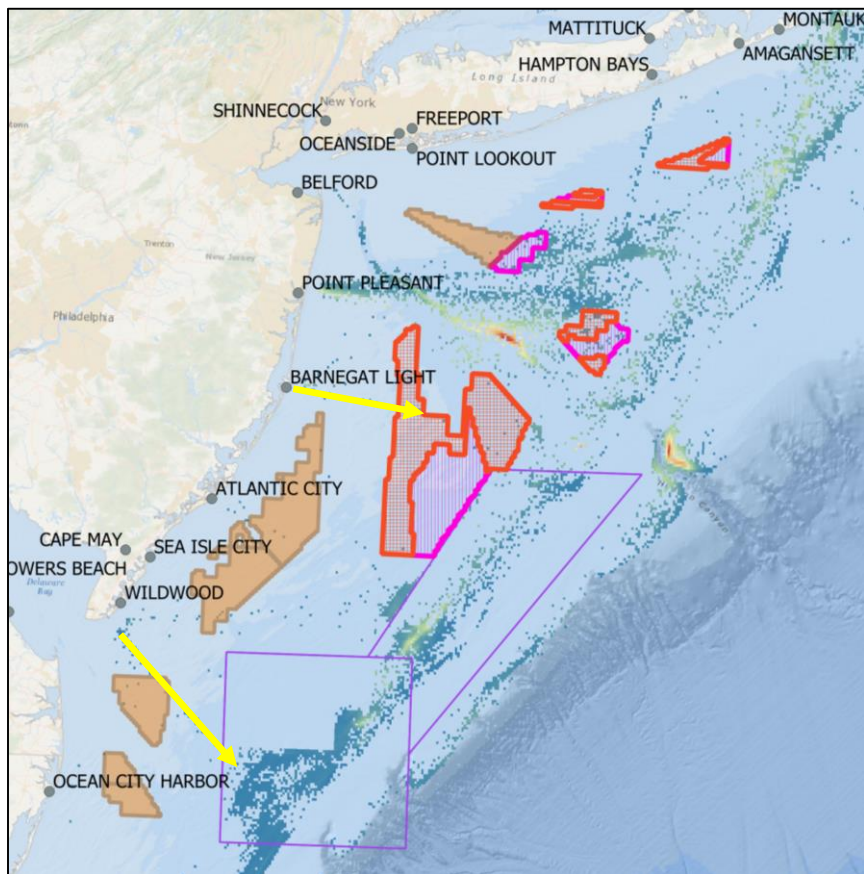


# July and August



2016

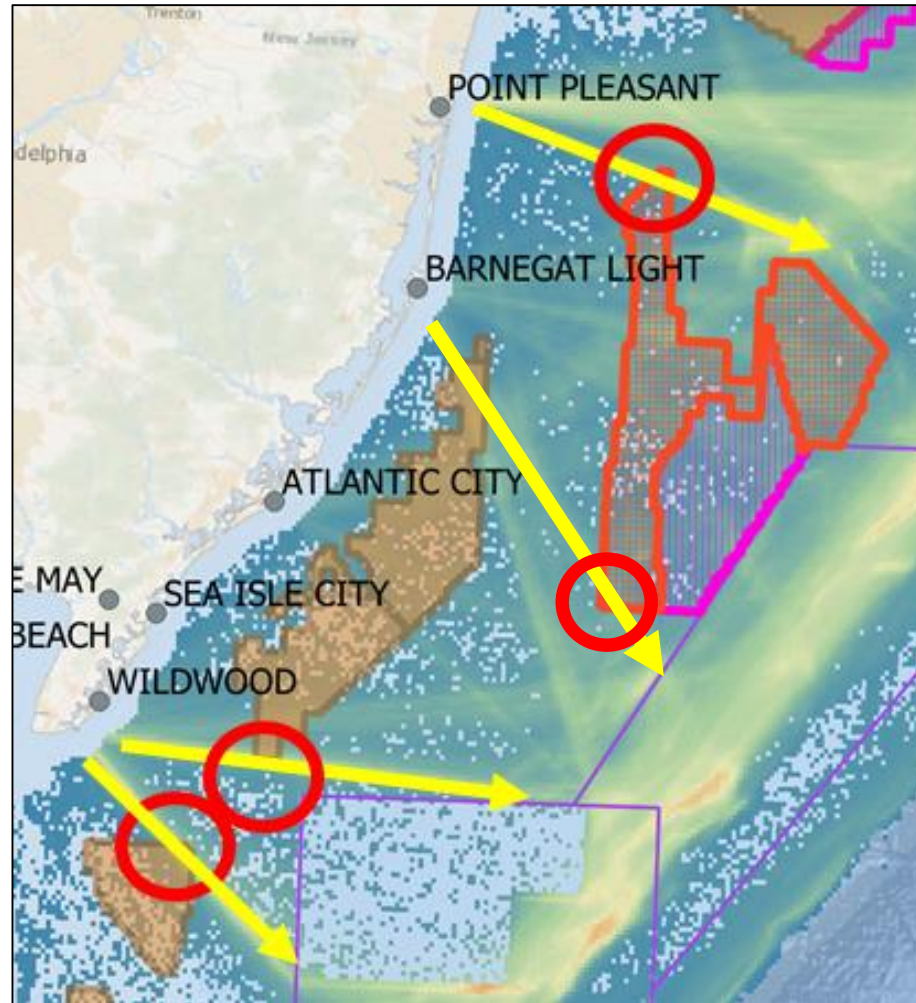
# November and December



2016

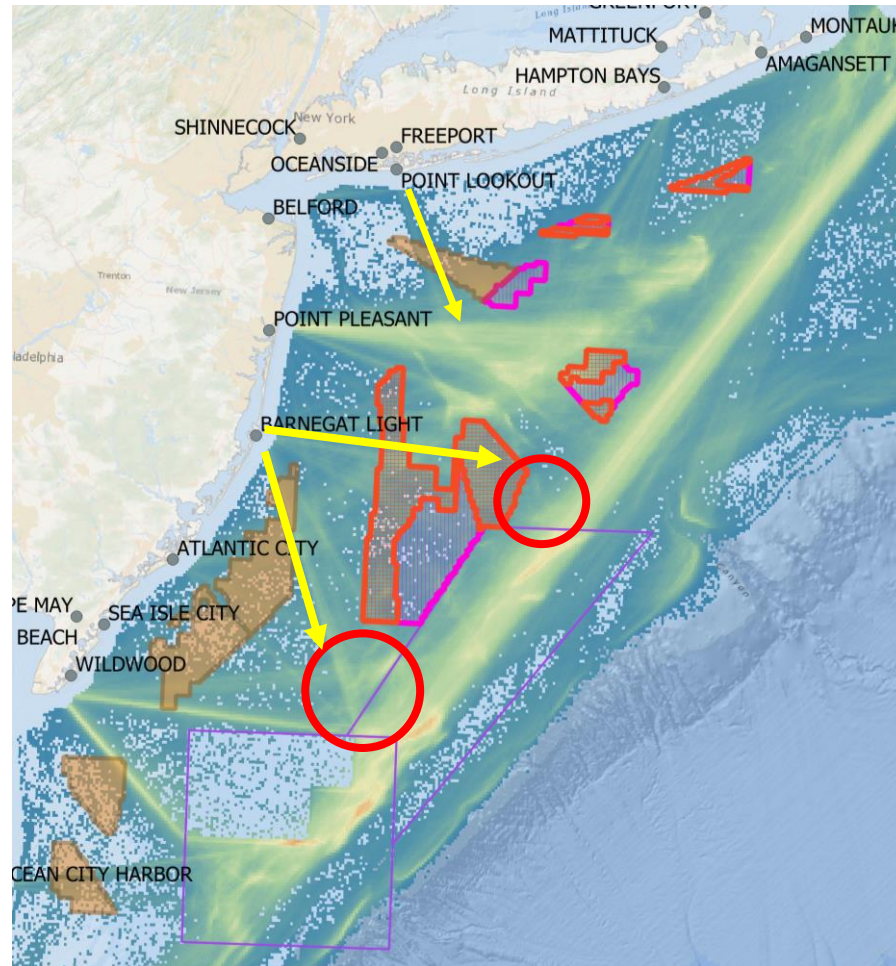


# Potential Areas to Avoid



**Turbine Placement**

# Potential Transit Lanes



**Fishing Hot Spots**





**NOAA  
FISHERIES**

Greater Atlantic  
Regional  
Fisheries Office

# Thank you! Questions?

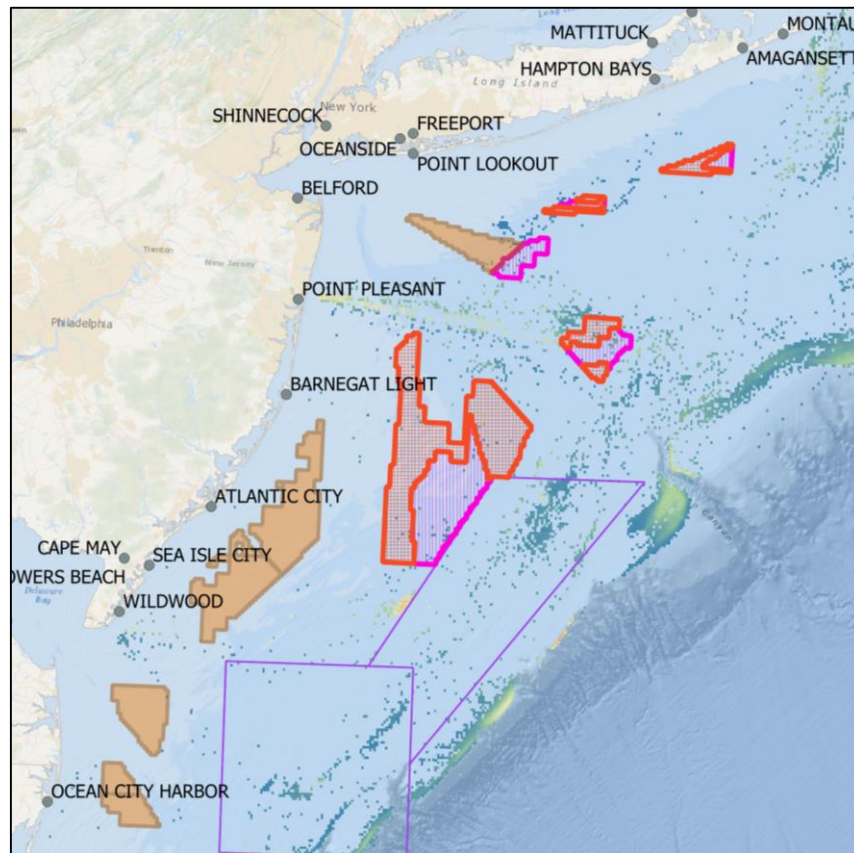
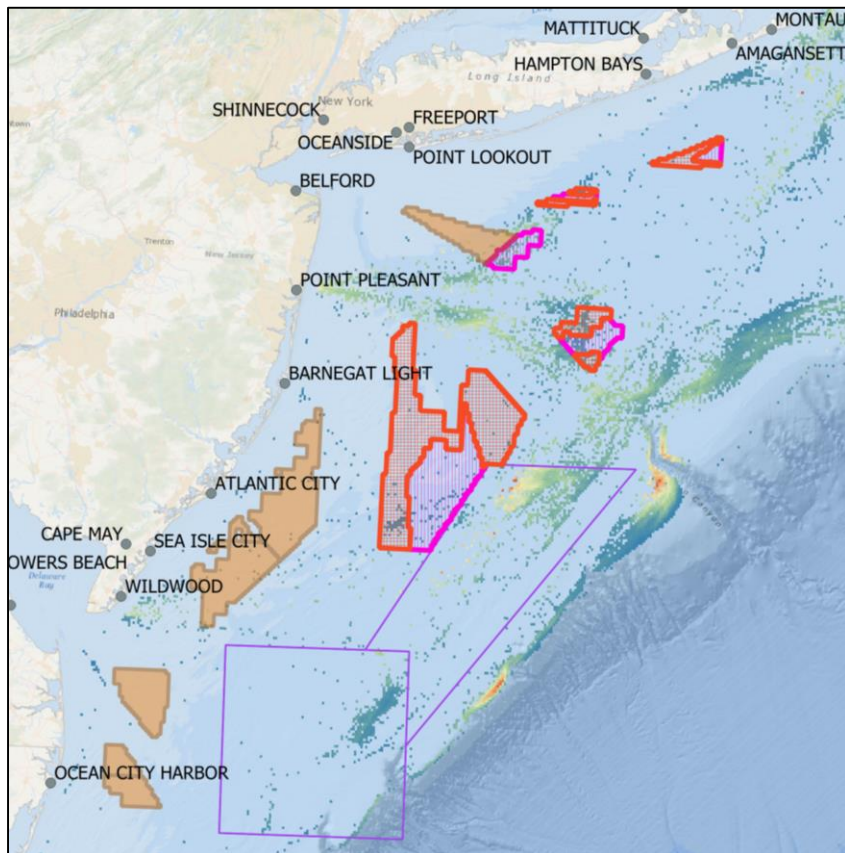
Douglas.Christel@noaa.gov  
(978) 281-9141

Benjamin.Galuardi@noaa.gov  
(978) 281-9187



**NOAA FISHERIES**

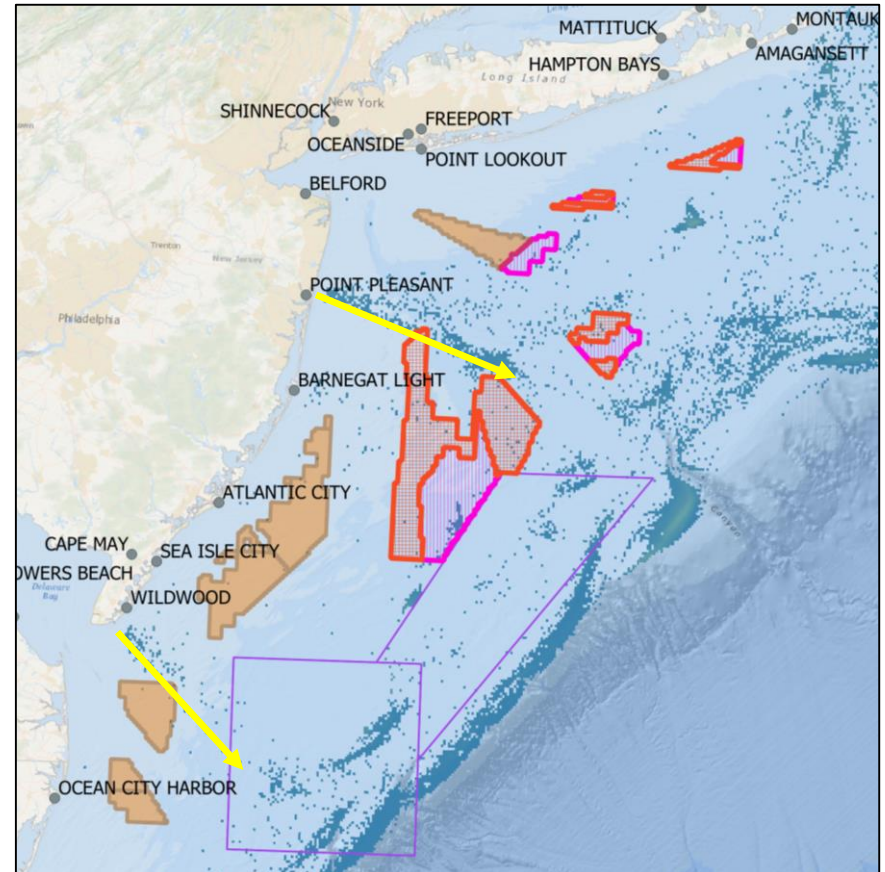
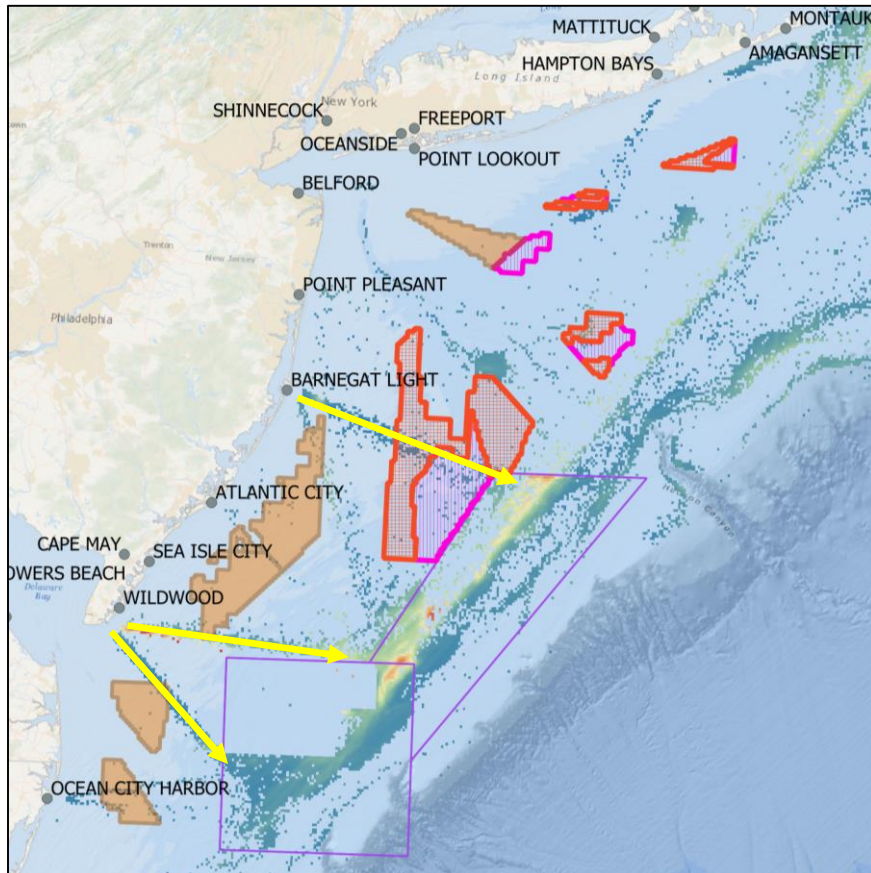
# January and February



2016

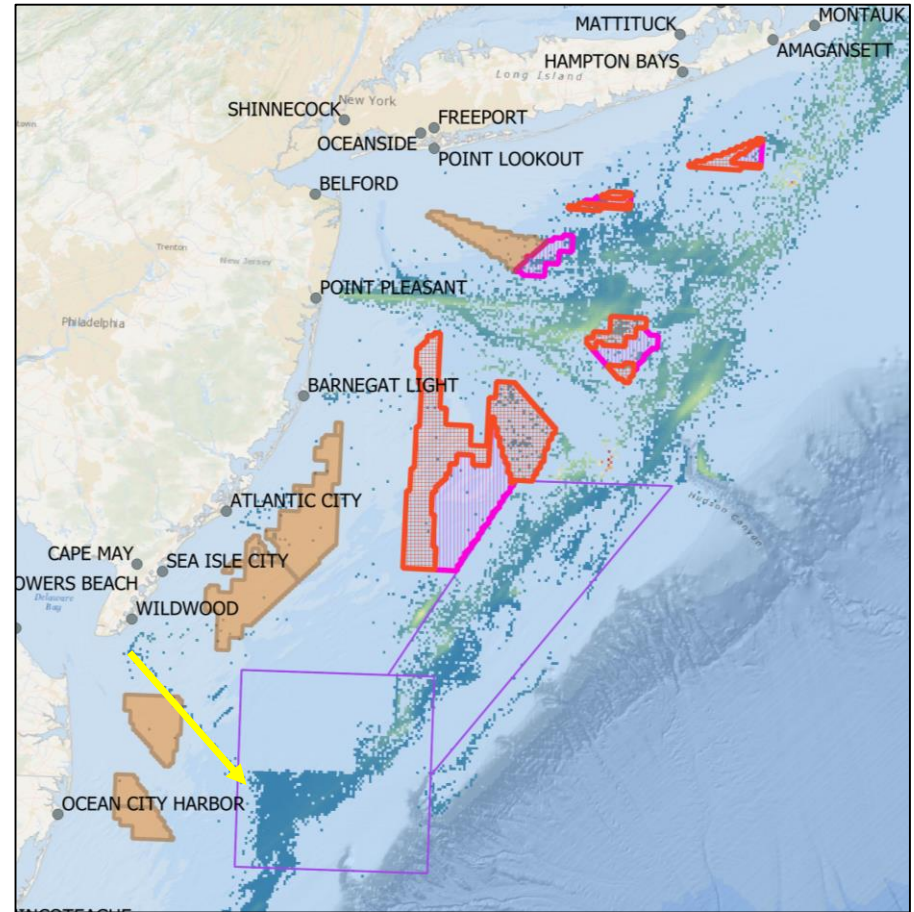
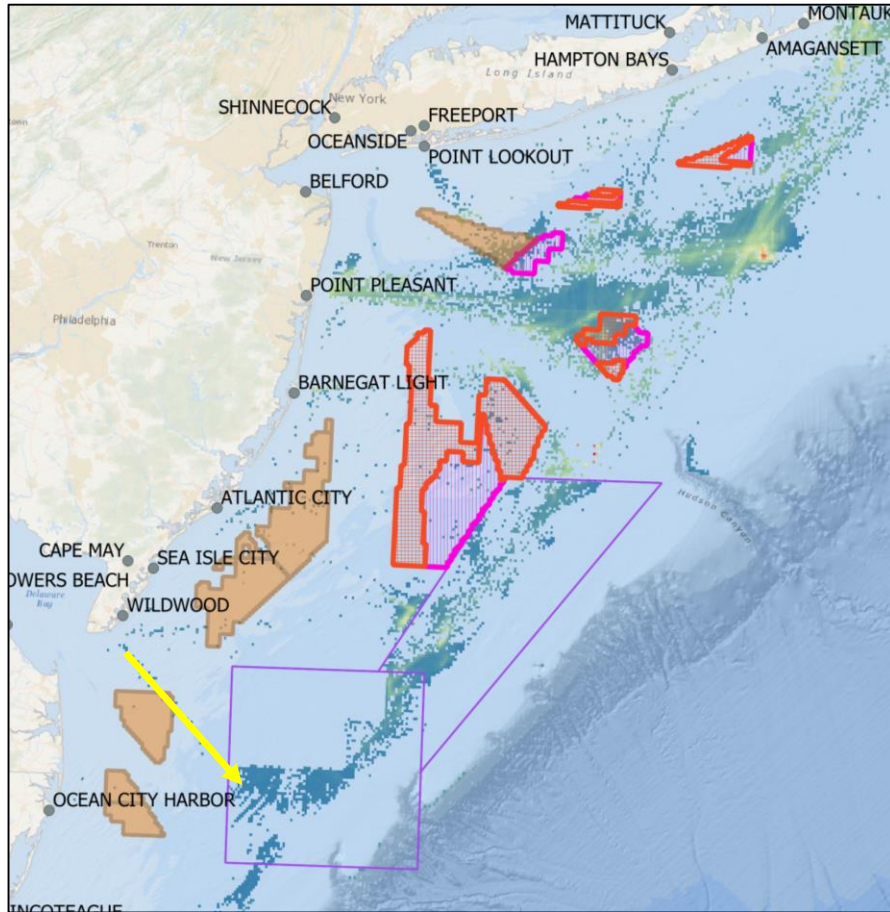


# March and April



2016

# September and October



2016