

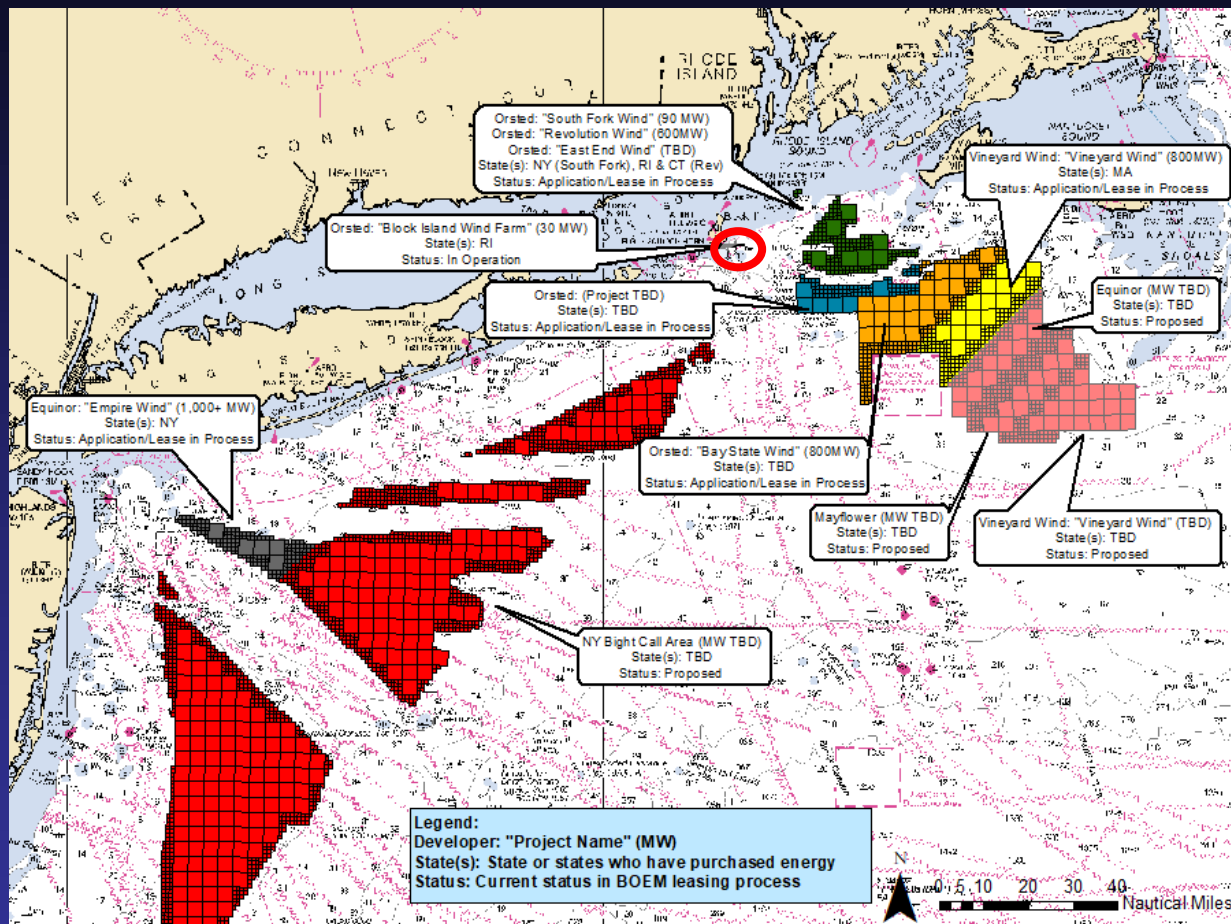
Navigation Risk Assessments

Mr. Edward G. LeBlanc

Chief, Waterways Management Division

U.S. Coast Guard Sector Southeastern New England







1. Coast Guard Interests:

- **Advocate for navigation safety**
 - **Not a proxy for any single waterway user group, nor any govt agency or developer**
 - **Recognize that change may be required**
- **Balance navigation safety with stakeholder interests**
- **Provide a frank assessment of potential impacts to navigation safety**
- **Serve the lead Federal permitting agency under NEPA**





2. Coast Guard Role (in vessel routing measures):

- **Facilitate discussion**
 - **May include CG-sponsored study**
- **Make recommendations to BOEM**





3. Coast Guard Authority:

- **Limited legal authority beyond 12nm**
 - **Cannot unilaterally establish navigation corridors**
 - **Cannot infringe on vessel activity**
- **International engagement/consent required for measures beyond 12nm**





Determining transit corridors is both:

➤ Science, and

➤ Art

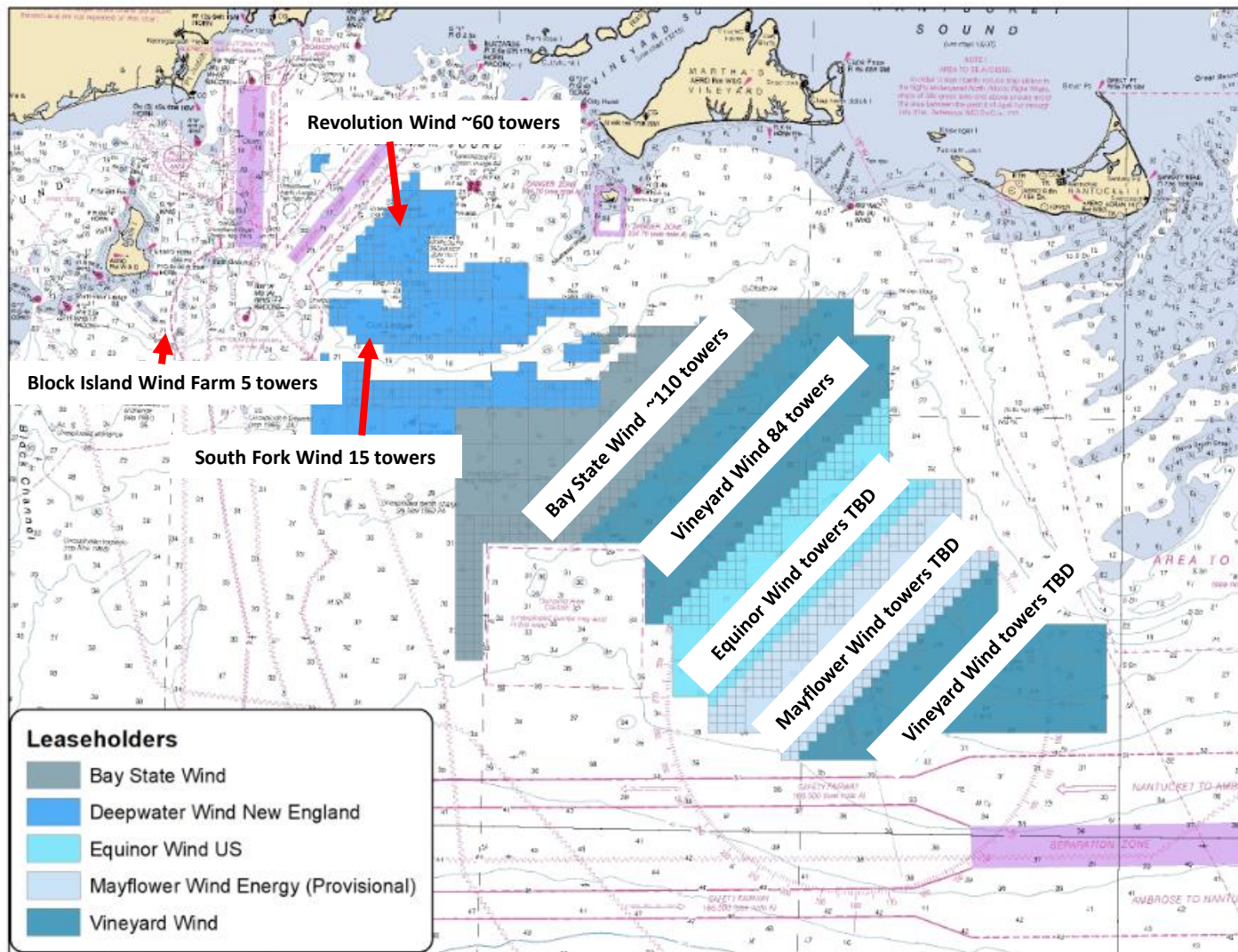




Determining transit corridors is both:

- **Empirical data (i.e., science)**
- **Evidence-based data (i.e., art)**

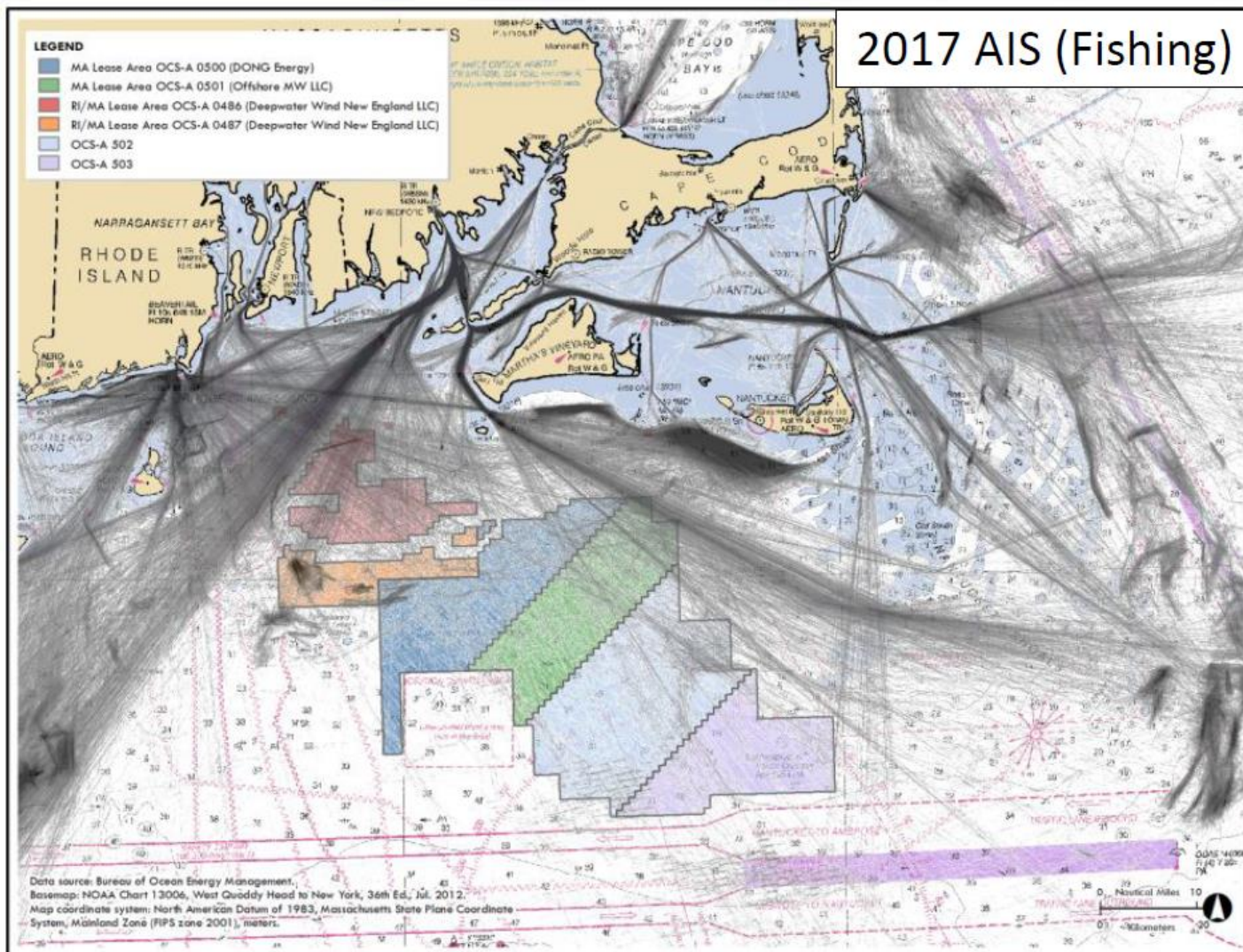




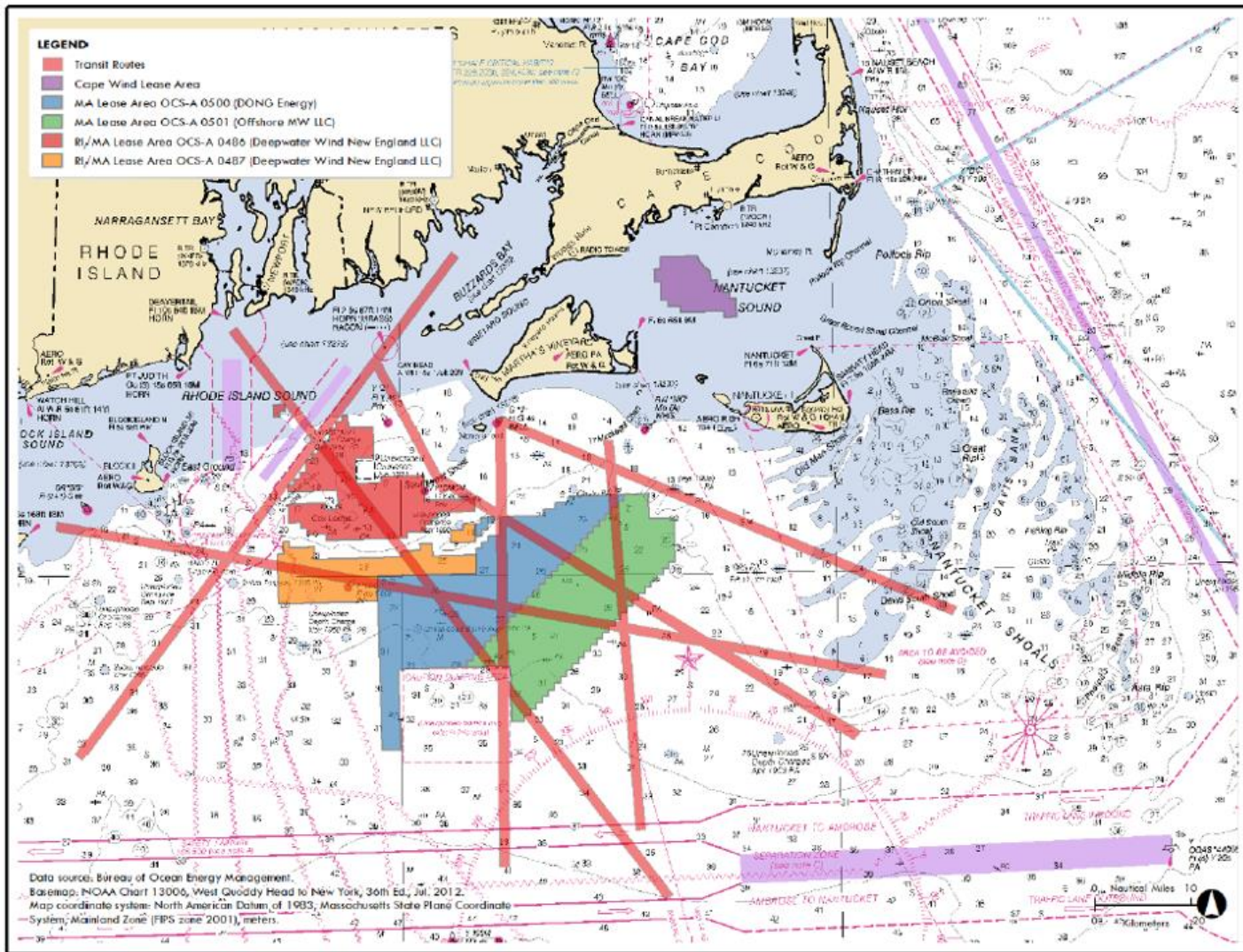
2017 AIS (Fishing)

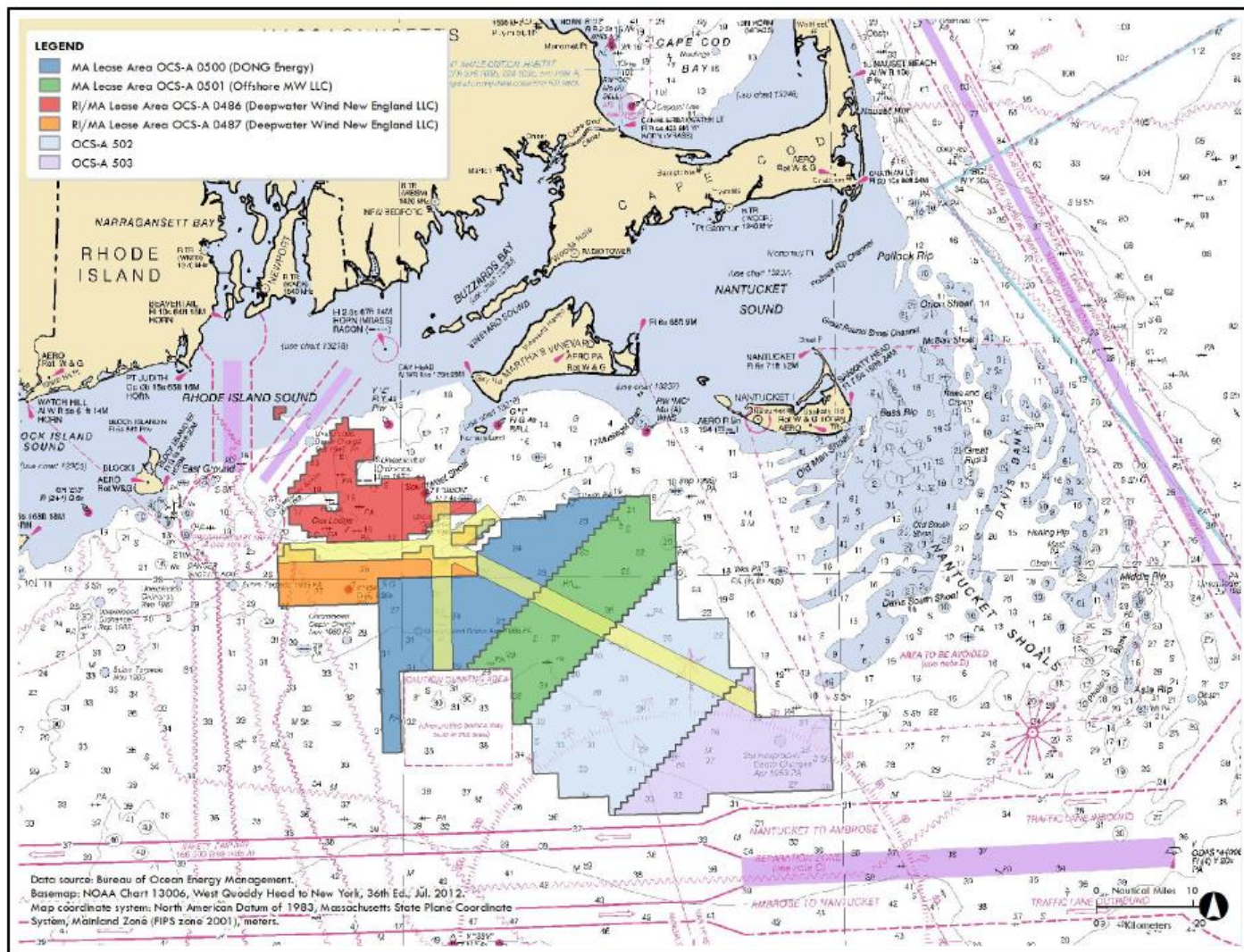
LEGEND

- MA Lease Area OCS-A 0500 (DONG Energy)
- MA Lease Area OCS-A 0501 (Offshore MW LLC)
- Ri/MA Lease Area OCS-A 0486 (Deepwater Wind New England LLC)
- Ri/MA Lease Area OCS-A 0487 (Deepwater Wind New England LLC)
- OCS-A 502
- OCS-A 503



Data source: Bureau of Ocean Energy Management.
 Basemap: NOAA Chart 13006, West Quoddy Head to New York, 36th Ed., Jul. 2012.
 Map coordinate system: North American Datum of 1983, Massachusetts State Plane Coordinate System, Mainland Zone (FIPS zone 2001), meters.

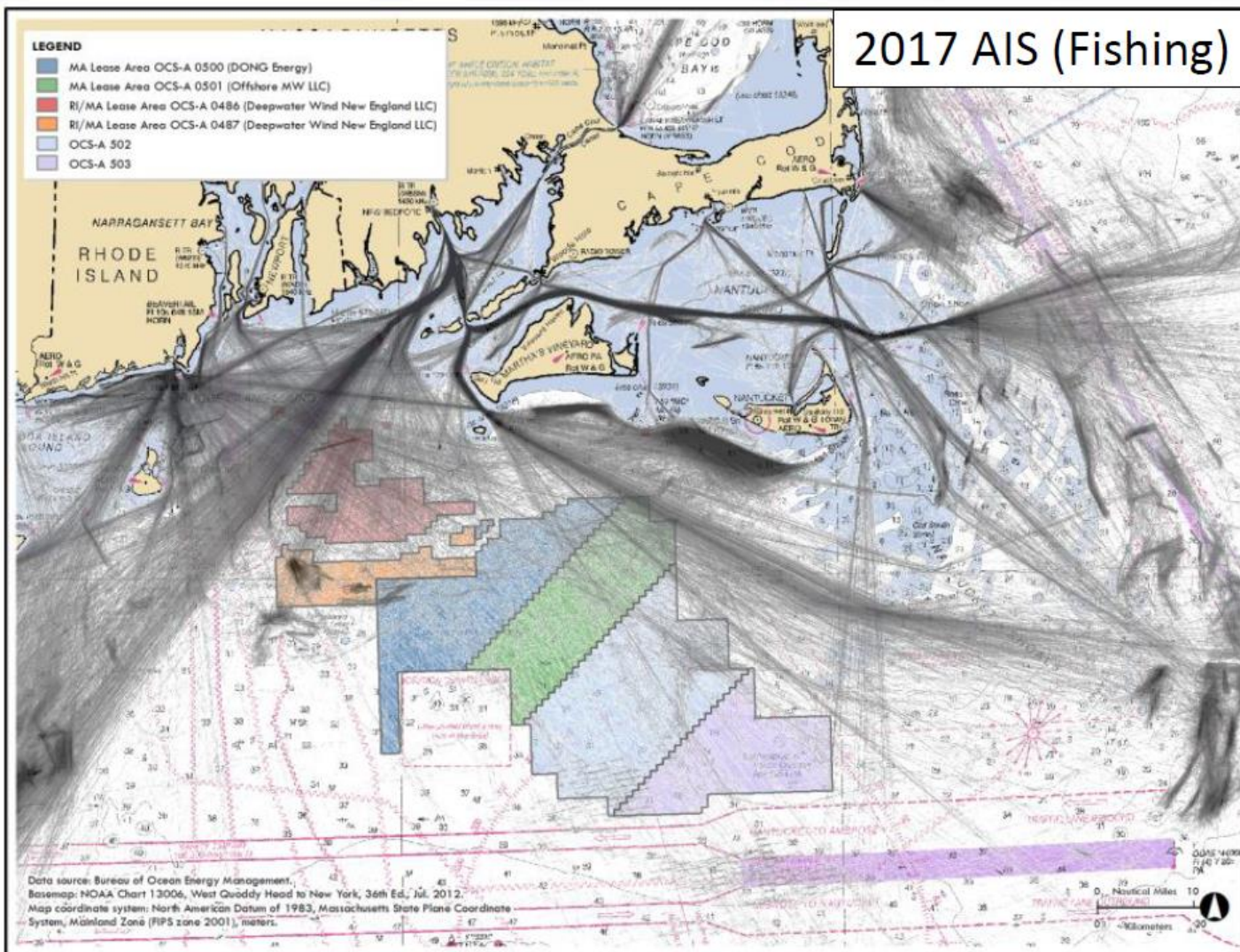




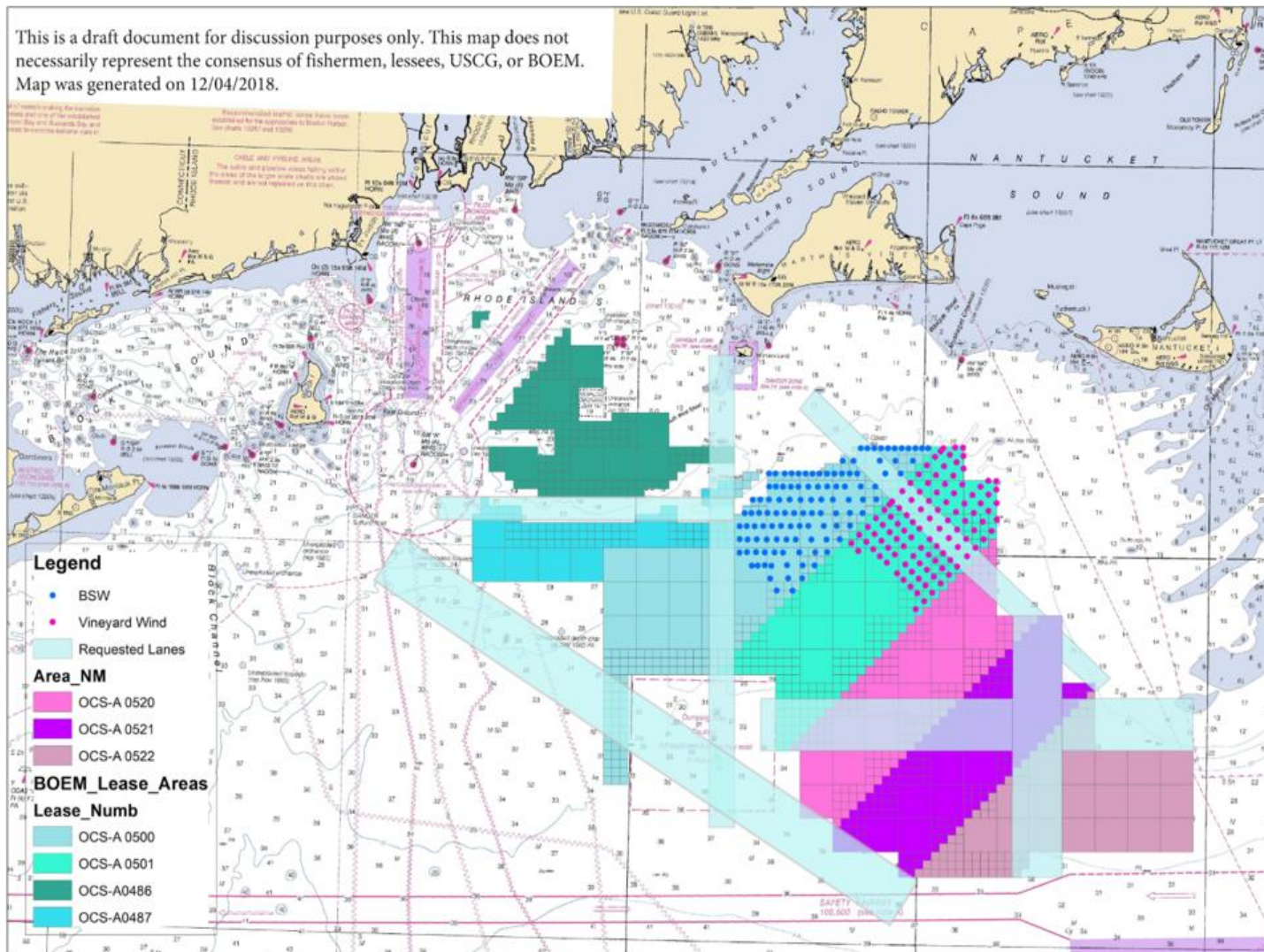
2017 AIS (Fishing)

LEGEND

- MA Lease Area OCS-A 0500 (DONG Energy)
- MA Lease Area OCS-A 0501 (Offshore MW LLC)
- Ri/MA Lease Area OCS-A 0486 (Deepwater Wind New England LLC)
- Ri/MA Lease Area OCS-A 0487 (Deepwater Wind New England LLC)
- OCS-A 502
- OCS-A 503

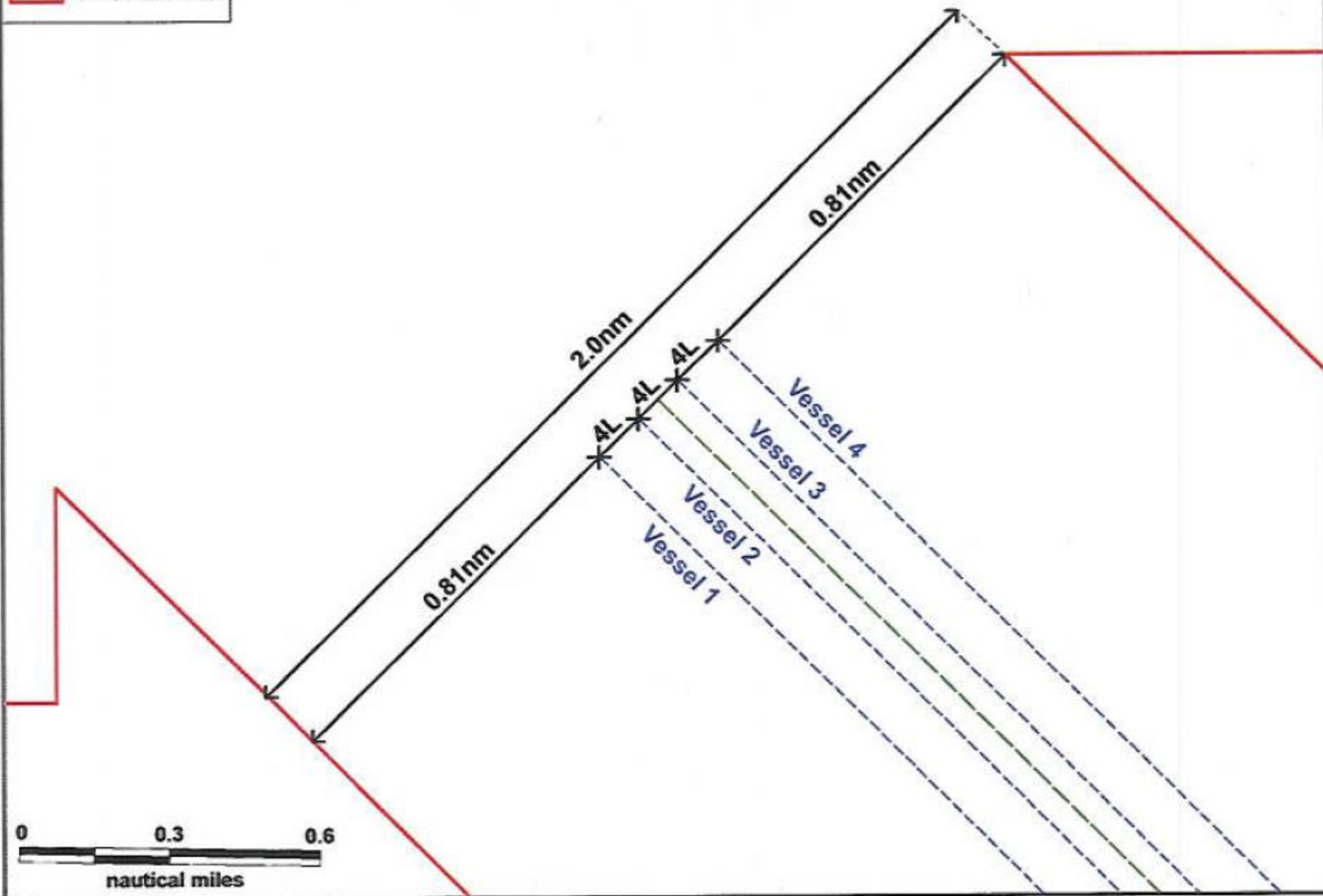


This is a draft document for discussion purposes only. This map does not necessarily represent the consensus of fishermen, lessees, USCG, or BOEM. Map was generated on 12/04/2018.

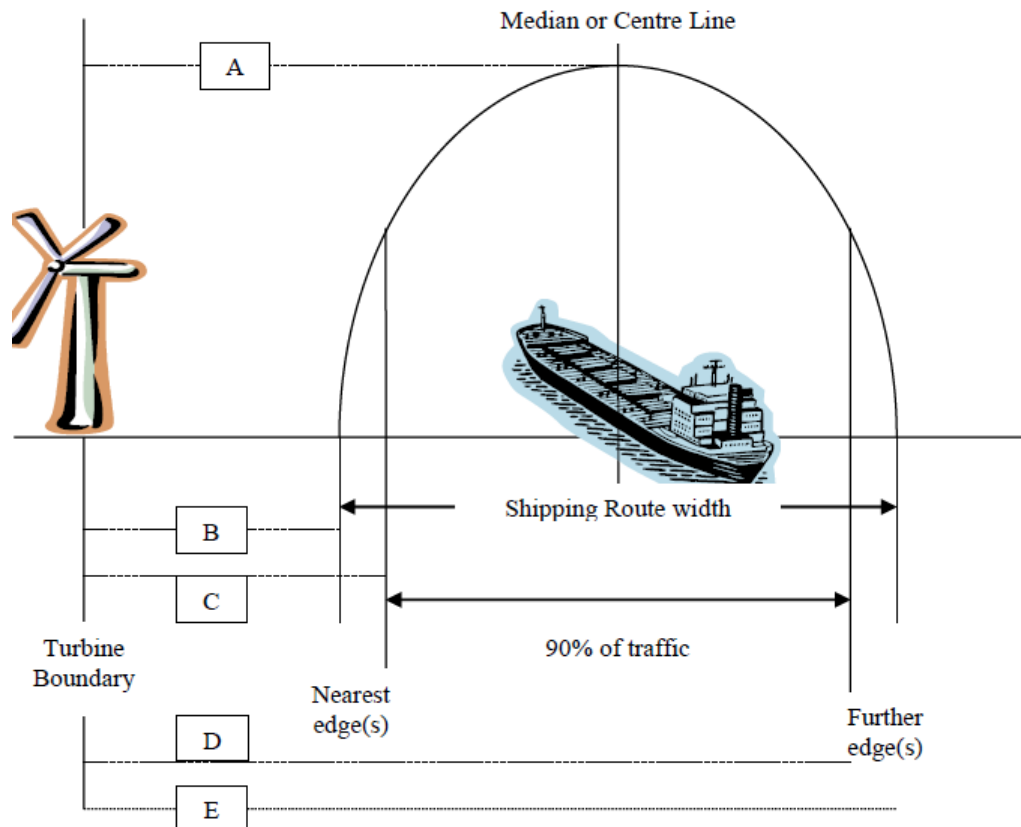


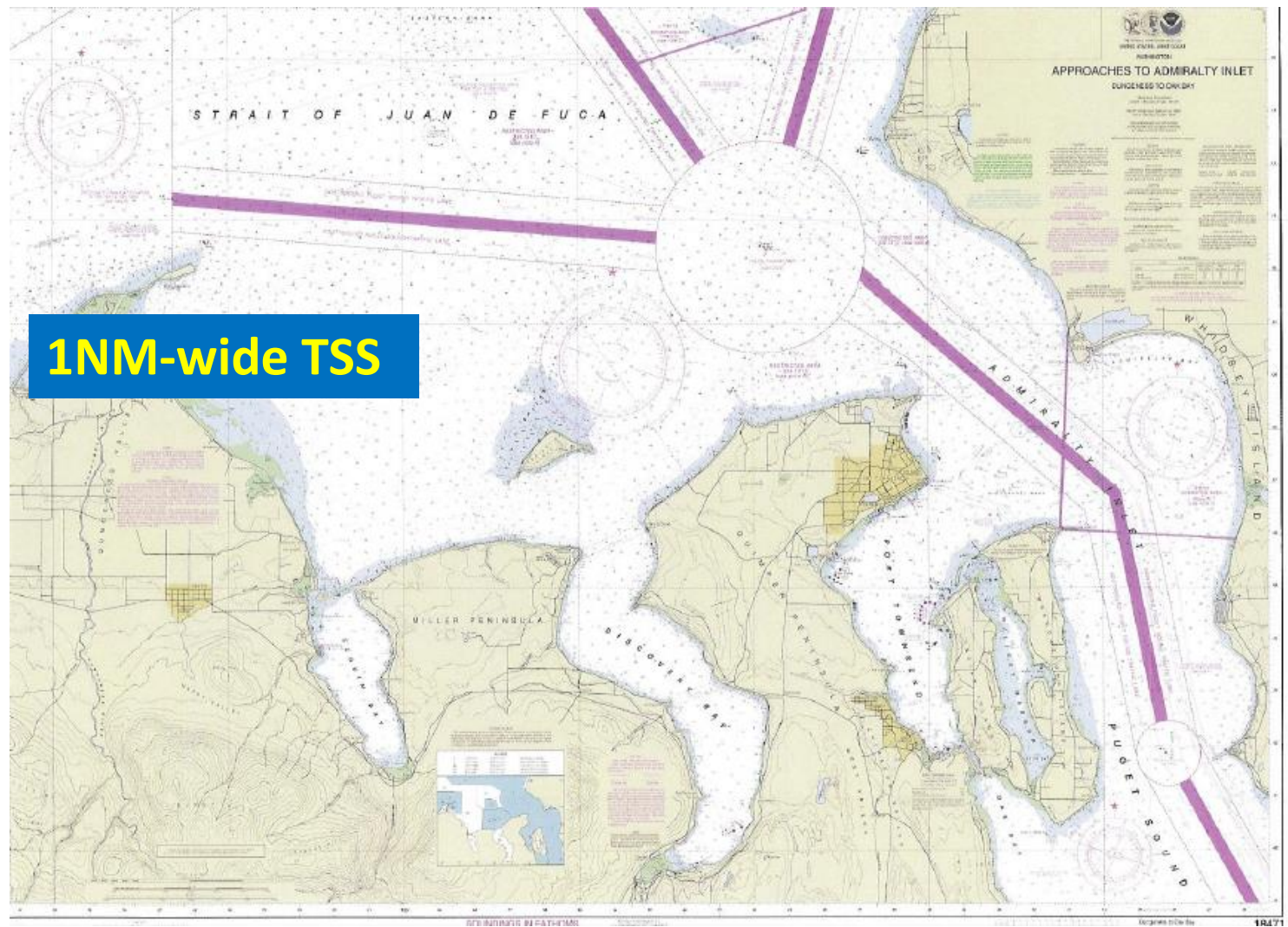
Legend

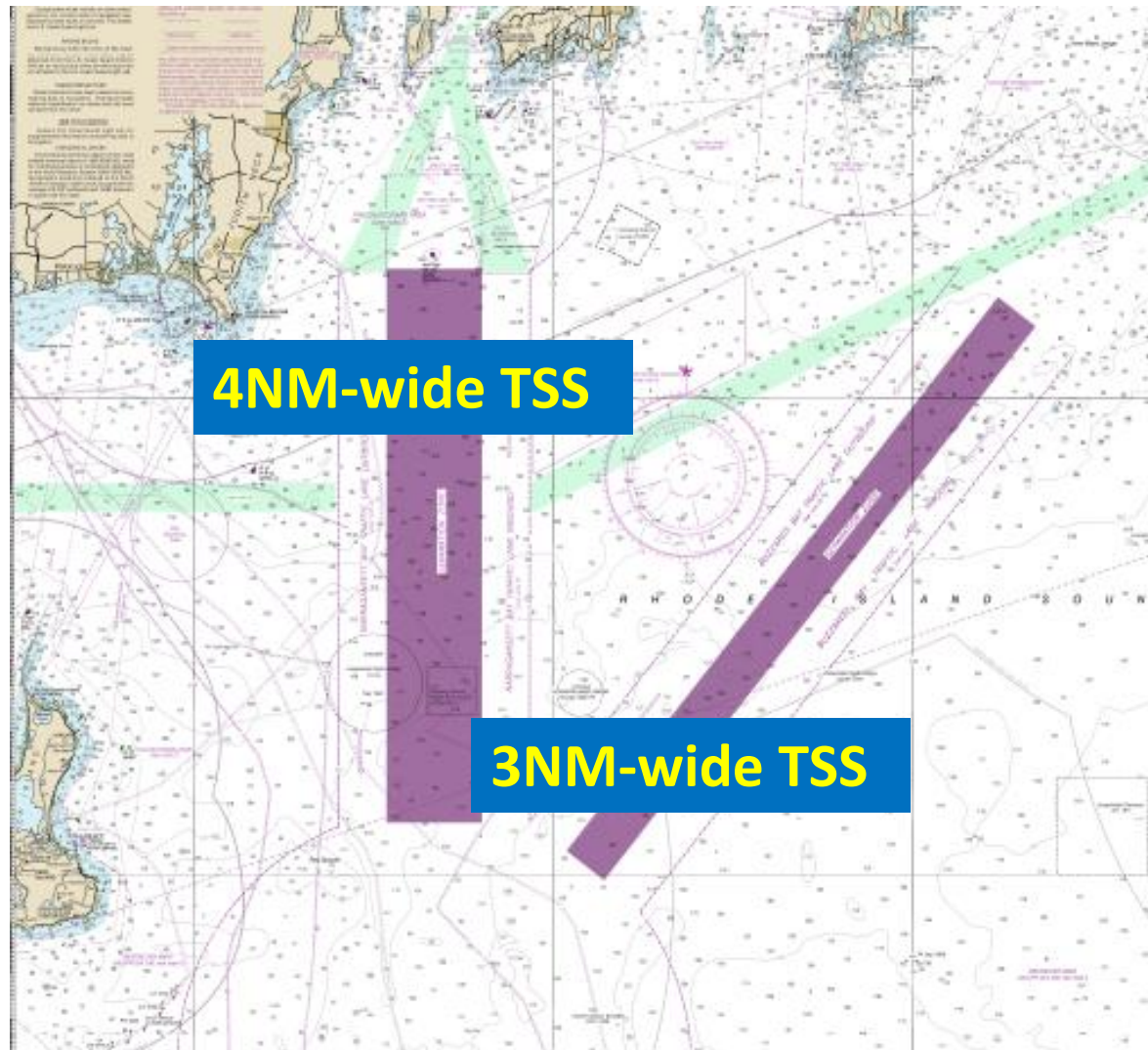
 Wind Farm Area



INTERACTIVE BOUNDARIES









Lanes, especially width, need
“intelligent application”
evaluated
“on a case-by-case
basis”





CG's single deliverable:

**Estimate of potential impact to
navigation safety**

**(Note: CG does not have approval or
disapproval authority.)**



Navigation Risk Assessments

Mr. Edward G. LeBlanc

Chief, Waterways Management Division

U.S. Coast Guard Sector Southeastern New England

